

型号	尺寸	材质	比例	设计	设计时间	修改内容	修改时间
OS-0480 英文说明书	双面印风琴折 95*142mm	80g铜版纸	1:1	徐海洲	2021-05-20		



5. Short press the function button to set the liquid dosage, when you approach your hands in the sensing area, the three-segment breathing light will blink the corresponding gear as below:

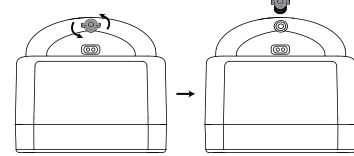
Short press the button	Liquid Dosage		Three-segment breathing light
	Foam	Spray	
I	0.2-0.3ml	0.3ml	
II	0.6-0.7ml	0.6ml	
III	1.0-1.1ml	1ml	



NOZZLE REPLACEMENT INSTRUCTIONS

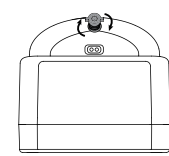
Disassemble

Rotate counterclockwise to remove the nozzle



Assemble

Rotate clockwise until the nozzle is tightened



ACCESSORIES

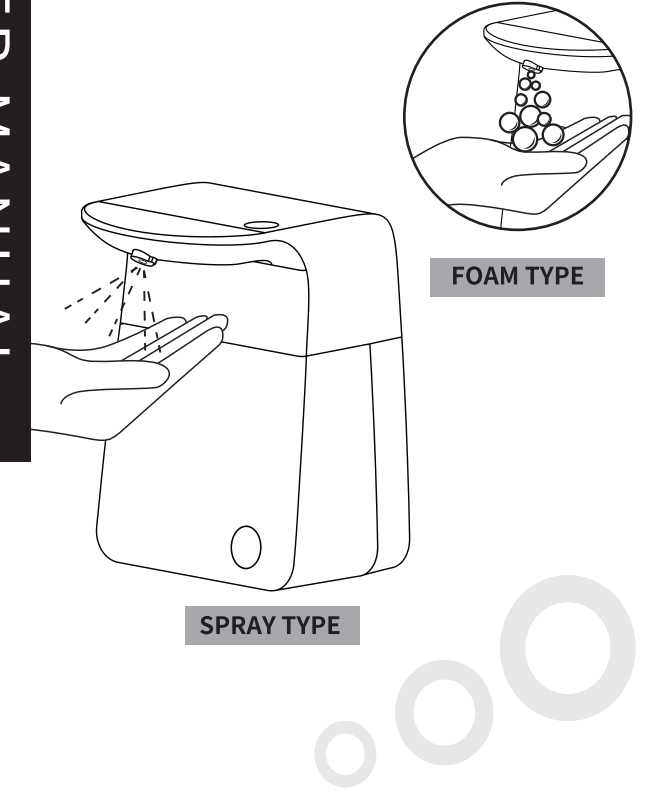
- Nozzle X2
- Screw X2
- Expansion plug X2

SAFETY PRECAUTION

- Do not expose the dispenser to direct sunlight to avoid deformation.
- Remove the batteries and pour away liquid when not in use for a prolonged period.
- Regular cleaning and maintenance is recommended.
- Do not clean the dispenser with water.
- Do not intentionally break or crash the dispenser.
- Do not use harsh or highly corrosive chemical or agents to clean the dispenser. - Will cause surface damage or deformation.
- Do not allow dust or foreign particles into the dispenser. - May cause outlet clogging. Please replace the liquid and clean the tank if there is any dirt or impurity in the tank.
- Do not disassemble, repair or transform without permission. - Will cause breakdown. Please refer to seller for assistance.
- Do not fill in corrosive chemicals.
- Keep away from fire.

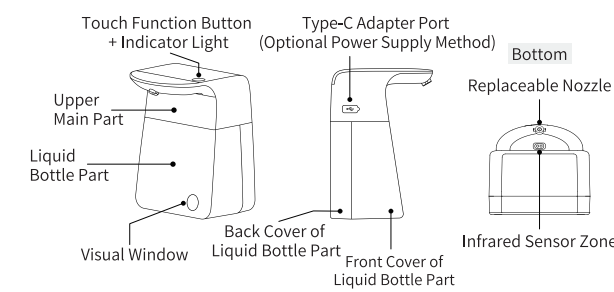
USER MANUAL

AUTOMATIC SOAP DISPENSER OS-0480

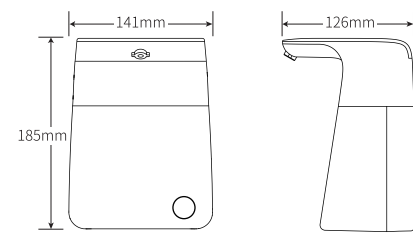


Please read user manual carefully before using to ensure proper operation. Please save this manual for further reference.

PARTS LIST



SPECIFICATION

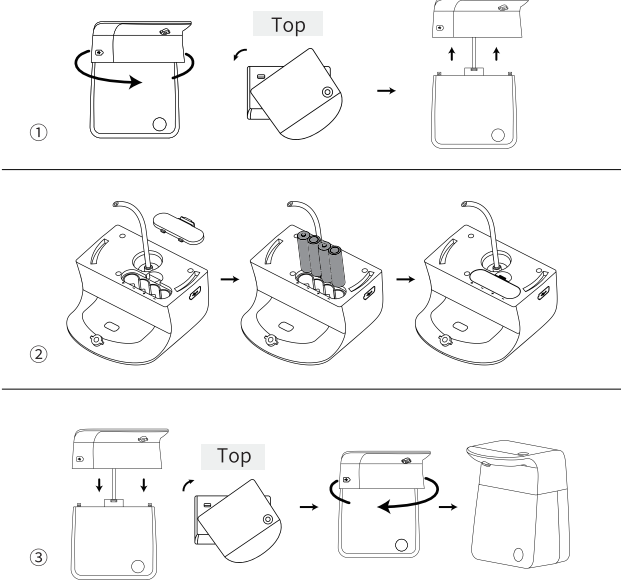


Unit Size	141*126*185mm	
Material	ABS+PC	
Capacity	950ml	
Unit Weight	645g (Adapter not included)	
Sensor Range	0-6cm	
Sensor Type	Infrared sensor	
Liquid Output Type	Foam	Spray
Liquid Dosage	I: 0.2-0.3ml II: 0.6-0.7ml III: 1.0-1.1ml	I: 0.3ml II: 0.6ml III: 1ml
Suitable Liquid	Foaming soap	Liquid alcoholity: 75%
Working Current	700mA	
Battery	4 pcs "AA" alkaline batteries (not included)	

PRE-OPERATION

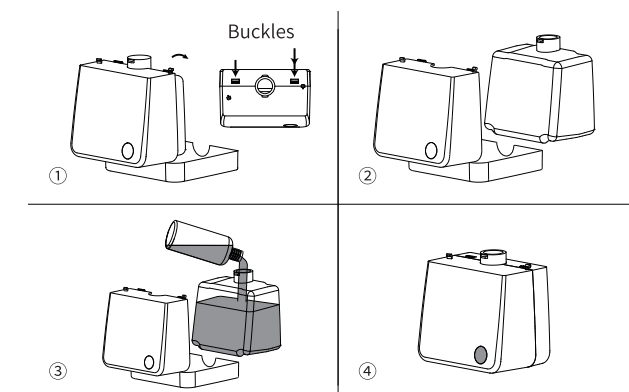
BATTERY LOADING

※ When using adapter as power supply, batteries are depowered by default.



- Grab the upper main part and rotate it off anticlockwise as shown in the picture.
- Remove the battery compartment cap and insert 4 pcs "AA" alkaline batteries, then load back the cap.
- Install the upper main part back to the liquid bottle part and rotate it clockwise as shown in the picture, the installation is complete when the two parts match each other.

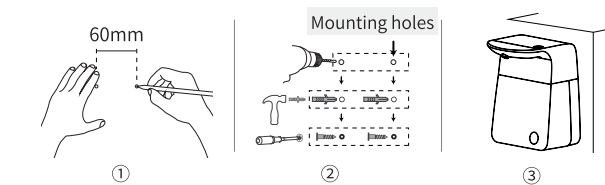
LIQUID FILLING



- Press down two buckles and open the back cover as shown in the picture;
- Take out the liquid bottle;
- Fill in suitable liquid;
- Install the liquid bottle inside the front cover and close up the back cover.

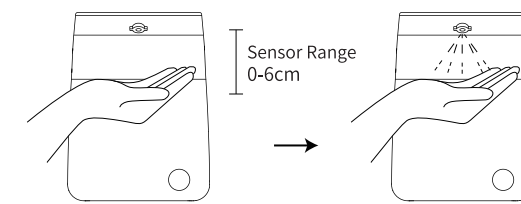
WALL MOUNTING OPTION

Please install the dispenser appropriately to avoid any moisture or water.



- Make two drilling marks with 60mm distance;
- Drill the mounting holes and insert expansion plugs and screws;
- Install the dispenser onto the screws on the wall.

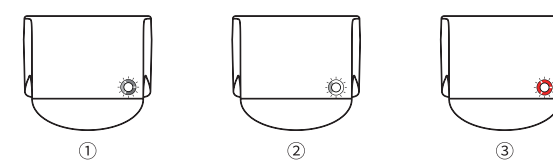
READY FOR USE



Please do not expose the sensor to strong sunlight. Prime the dispenser by inducing several times to let the air out for first use.

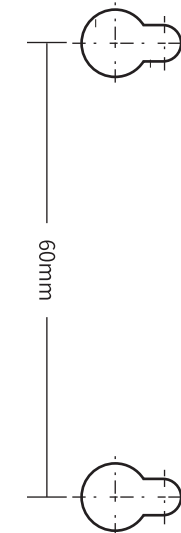
- Long press the function button for 2 seconds to turn on the dispenser, the three-segment breathing light will blink white segment by segment, the default liquid dosage is I. (Pic 1)
- When standby, approach your hands in the sensing area, the white breathing light will blink according to liquid dosage setting, 1 segment to indicate liquid dosage I. (Pic 2)
- When under low battery condition, the three-segment breathing light will blink red every 3 seconds. (Pic 3)
- Long press the function button for 2 seconds to turn off the dispenser, the three-segment breathing light will blink white for 2 seconds to indicate power off.

※ ATTENTION: The sensor has no reaction on dark or black objects.



Please refer it off along the line

Please use this card to make 2 drilling marks for wall mounted installation.



Mounting Holes Distance Measurement for Wall Mounted Installation