

Verification Report

No. CANEC1603086301

Date: 15 Mar 2016

Page 1 of 32

SHENZHEN CITY SVAVO BATHROOM PRODUCTS CO.,LTD.

NO.4 FACTORY XINWU INDUSTRIAL, SHABO, PINGSHAN NEW DISTRICT, SHENZHEN
518000, CHINA

Sample Name : Automatic Soap Dispenser
SGS Job No. : CP16-010267 - GZ
Tested Basic Model No. V-472
(P.O. No.) :
Supplier : SVAVO
Manufacturer : SVAVO
Country of Origin : CHINA
Date of Sample Received : 04 Mar 2016
Verification Period : 04 Mar 2016 - 15 Mar 2016
Verification Requested : With reference to RoHS Directive 2011/65/EU recasting 2002/95/EC.
Verification Method : Please refer to next page(s).
Verification Result : Please refer to next page(s).
Verification Conclusion : Based on the verification results of the submitted samples, the results of Lead, Mercury, Cadmium, Hexavalent chromium, Polybrominated biphenyls (PBBs), Polybrominated diphenyl ethers (PBDEs) comply with the limits as set by RoHS Directive 2011/65/EU Annex II; recasting 2002/95/EC.
Note : The test results are related only to the tested items. The report shall not be reproduced except in full without the written approval of the testing laboratory.

Signed for and on behalf of
SGS-CSTC Standards Technical Services Co., Ltd. Guangzhou Branch

Jenny

Jenny Liao
Approved Signatory



This document is issued by the Company subject to its General Conditions of Service printed overleaf, available on request or accessible at <http://www.sgs.com/en/Terms-and-Conditions.aspx> and, for electronic format documents, subject to Terms and Conditions for Electronic Documents at <http://www.sgs.com/en/Terms-and-Conditions/Terms-e-Documents.aspx>. Attention is drawn to the limitation of liability, indemnification and jurisdiction issues defined therein. Any holder of this document is advised that information contained hereon reflects the Company's findings at the time of its intervention only and within the limits of Client's instructions, if any. The Company's sole responsibility is to its Client and this document does not exonerate parties to a transaction from exercising all their rights and obligations under the transaction documents. This document cannot be reproduced except in full, without prior written approval of the Company. Any unauthorized alteration, forgery or falsification of the content or appearance of this document is unlawful and offenders may be prosecuted to the fullest extent of the law. Unless otherwise stated the results shown in this test report refer only to the sample(s) tested.
Attention: To check the authenticity of testing /inspection report & certificate, please contact us at telephone: (86-755) 8307 1443, or email: CN.Doccheck@sgs.com

198 Kezhu Road, Sciencetech Park Guangzhou Economic & Technology Development District, Guangzhou, China 510663 t (86-20) 82155555 f (86-20) 82075113 www.sgsgroup.com.cn
中国·广州·经济技术开发区科学城科珠路198号 邮编: 510663 t (86-20) 82155555 f (86-20) 82075113 e sgs.china@sgs.com

Verification Report

No. CANEC1603086301

Date: 15 Mar 2016

Page 2 of 32

Verification Method :

1. With reference to IEC 62321-2:2013, review was performed for the samples disjointed from the submitted articles.
2. With reference to IEC 62321-1:2013, tests were performed for the samples indicated by the photos in this report
 - (1) With reference to IEC 62321-3-1:2013, screening by EDXRF spectroscopy
 - (2) Wet chemical test method
 - a. With reference to IEC 62321-5:2013, determination of Cadmium by ICP-OES
 - b. With reference to IEC 62321-5:2013, determination of Lead by ICP-OES
 - c. With reference to IEC 62321-4:2013, determination of Mercury by ICP-OES
 - d. With reference to IEC 62321-7-1:2015 & IEC 62321:2008, determination of Hexavalent chromium by Colorimetric method using UV-Vis.
 - e. With reference to IEC 62321-6:2015, determination of PBBs and PBDEs by GC-MS



This document is issued by the Company subject to its General Conditions of Service printed overleaf, available on request or accessible at <http://www.sgs.com/en/Terms-and-Conditions.aspx> and, for electronic format documents, subject to Terms and Conditions for Electronic Documents at <http://www.sgs.com/en/Terms-and-Conditions/Terms-e-Documents.aspx>. Attention is drawn to the limitation of liability, indemnification and jurisdiction issues defined therein. Any holder of this document is advised that information contained hereon reflects the Company's findings at the time of its intervention only and within the limits of Client's instructions, if any. The Company's sole responsibility is to its Client and this document does not exonerate parties to a transaction from exercising all their rights and obligations under the transaction documents. This document cannot be reproduced except in full, without prior written approval of the Company. Any unauthorized alteration, forgery or falsification of the content or appearance of this document is unlawful and offenders may be prosecuted to the fullest extent of the law. Unless otherwise stated the results shown in this test report refer only to the sample(s) tested.

Attention: To check the authenticity of testing / inspection report & certificate, please contact us at telephone: (86-755) 8307 1443, or email: CN.Doccheck@sgs.com

198 Kezhu Road, Sci-Tech Park Guangzhou Economic & Technology Development District, Guangzhou, China 510663 t (86-20) 82155555 f (86-20) 82075113 www.sgsgroup.com.cn
中国·广州·经济技术开发区科学城科珠路198号 邮编: 510663 t (86-20) 82155555 f (86-20) 82075113 e sgs.china@sgs.com

Verification Report

No. CANEC1603086301

Date: 15 Mar 2016

Page 3 of 32

In accordance with the result of material risk assessment, the following disjointed parts in the submitted sample have been verified.

Part No.	Part Description	BOM No.	Restricted Substances	Results of EDXRF (1)	Result of Wet Chemical Testing(2) (mg/kg)	Conclusion on EU RoHS	Sample Submitted / Resubmitted Date
1	White plastic base	-	Pb Cd Hg Cr(VI)▼ PBBs PBDEs	BL BL BL BL BL BL	--- --- --- --- --- ---	Comply Comply Comply Comply Comply Comply	04 Mar 2016
2	Black plastic shell (on No.1)	-	Pb Cd Hg Cr(VI)▼ PBBs PBDEs	BL BL BL BL BL BL	--- --- --- --- --- ---	Comply Comply Comply Comply Comply Comply	04 Mar 2016
3	White adhesive plastic sheet w/ black printing (label on No.2)	-	Pb Cd Hg Cr(VI)▼ PBBs PBDEs	BL BL BL BL BL BL	--- --- --- --- --- ---	Comply Comply Comply Comply Comply Comply	04 Mar 2016
4	Black rubber sheet (on No.1)	-	Pb Cd Hg Cr(VI)▼ PBBs PBDEs	BL BL BL BL BL BL	--- --- --- --- --- ---	Comply Comply Comply Comply Comply Comply	04 Mar 2016

Part No.	Part Description	BOM No.	Restricted Substances	Results of EDXRF (1)	Result of Wet Chemical Testing(2) (mg/kg)	Conclusion on EU RoHS	Sample Submitted / Resubmitted Date
5	White plastic sheet (on No.1)	-	Pb Cd Hg Cr(VI)▼ PBBs PBDEs	BL BL BL BL BL BL	--- --- --- --- --- ---	Comply Comply Comply Comply Comply Comply	04 Mar 2016
6	Black plastic shell (on No.2)	-	Pb Cd Hg Cr(VI)▼ PBBs PBDEs	BL BL BL BL BL BL	--- --- --- --- --- ---	Comply Comply Comply Comply Comply Comply	04 Mar 2016
7	Translucent plastic shell (on No.2)	-	Pb Cd Hg Cr(VI)▼ PBBs PBDEs	BL BL BL BL BL BL	--- --- --- --- --- ---	Comply Comply Comply Comply Comply Comply	04 Mar 2016
8	Black plastic shell (on No.7)	-	Pb Cd Hg Cr(VI)▼ PBBs PBDEs	BL BL BL BL BL BL	--- --- --- --- --- ---	Comply Comply Comply Comply Comply Comply	04 Mar 2016

Part No.	Part Description	BOM No.	Restricted Substances	Results of EDXRF (1)	Result of Wet Chemical Testing(2) (mg/kg)	Conclusion on EU RoHS	Sample Submitted / Resubmitted Date
9	Black rubber ring (in No.1)	-	Pb Cd Hg Cr(VI)▼ PBBs PBDEs	BL BL BL BL BL BL	--- --- --- --- --- ---	Comply Comply Comply Comply Comply Comply	04 Mar 2016
10	Silvery metal screw (in No.1)	-	Pb Cd Hg Cr(VI)▼ PBBs PBDEs	BL BL BL IN --- ---	--- --- --- ND --- ---	Comply Comply Comply Comply --- ---	04 Mar 2016
11	Silvery metal sheet (in No.1)	-	Pb Cd Hg Cr(VI)▼ PBBs PBDEs	BL BL BL BL --- ---	--- --- --- --- --- ---	Comply Comply Comply Comply --- ---	04 Mar 2016
12	Silvery metal solder (on No.11)	-	Pb Cd Hg Cr(VI)▼ PBBs PBDEs	BL BL BL BL --- ---	--- --- --- --- --- ---	Comply Comply Comply Comply --- ---	04 Mar 2016

Part No.	Part Description	BOM No.	Restricted Substances	Results of EDXRF (1)	Result of Wet Chemical Testing(2) (mg/kg)	Conclusion on EU RoHS	Sample Submitted / Resubmitted Date
13	Silvery metal spring (on No.11)	-	Pb Cd Hg Cr(VI)▼ PBBs PBDEs	BL BL BL BL --- ---	--- --- --- --- --- ---	Comply Comply Comply Comply --- ---	04 Mar 2016
14	White plastic cover (on No.7)	-	Pb Cd Hg Cr(VI)▼ PBBs PBDEs	BL BL BL BL BL BL	--- --- --- --- --- ---	Comply Comply Comply Comply Comply Comply	04 Mar 2016
15	Black rubber ring (on No.14)	-	Pb Cd Hg Cr(VI)▼ PBBs PBDEs	BL BL BL BL BL BL	--- --- --- --- --- ---	Comply Comply Comply Comply Comply Comply	04 Mar 2016
16	White plastic part (connected w/ No.14)	-	Pb Cd Hg Cr(VI)▼ PBBs PBDEs	BL BL BL BL BL BL	--- --- --- --- --- ---	Comply Comply Comply Comply Comply Comply	04 Mar 2016

Part No.	Part Description	BOM No.	Restricted Substances	Results of EDXRF (1)	Result of Wet Chemical Testing(2) (mg/kg)	Conclusion on EU RoHS	Sample Submitted / Resubmitted Date
17	Translucent rubber ring (on No.16)	-	Pb Cd Hg Cr(VI)▼ PBBs PBDEs	BL BL BL BL BL BL	--- --- --- --- --- ---	Comply Comply Comply Comply Comply Comply	04 Mar 2016
18	Silvery metal rod (in No.16)	-	Pb Cd Hg Cr(VI)▼ PBBs PBDEs	BL BL BL IN --- ---	--- --- --- ND --- ---	Comply Comply Comply Comply --- ---	04 Mar 2016
19	White plastic shell (on No.16)	-	Pb Cd Hg Cr(VI)▼ PBBs PBDEs	BL BL BL BL BL BL	--- --- --- --- --- ---	Comply Comply Comply Comply Comply Comply	04 Mar 2016
20	White plastic cover (on No.19)	-	Pb Cd Hg Cr(VI)▼ PBBs PBDEs	BL BL BL BL BL BL	--- --- --- --- --- ---	Comply Comply Comply Comply Comply Comply	04 Mar 2016

Part No.	Part Description	BOM No.	Restricted Substances	Results of EDXRF (1)	Result of Wet Chemical Testing(2) (mg/kg)	Conclusion on EU RoHS	Sample Submitted / Resubmitted Date
21	White plastic gear (in No.19)	-	Pb Cd Hg Cr(VI)▼ PBBs PBDEs	BL BL BL BL BL BL	--- --- --- --- --- ---	Comply Comply Comply Comply Comply Comply	04 Mar 2016
22	Silvery metal screw (on No.19)	-	Pb Cd Hg Cr(VI)▼ PBBs PBDEs	BL BL BL IN --- ---	--- --- --- ND --- ---	Comply Comply Comply Comply --- ---	04 Mar 2016
23	White plastic part (on No.14)	-	Pb Cd Hg Cr(VI)▼ PBBs PBDEs	BL BL BL BL BL BL	--- --- --- --- --- ---	Comply Comply Comply Comply Comply Comply	04 Mar 2016
24	Silvery metal shell w/ black printing (on No.14)	-	Pb Cd Hg Cr(VI)▼ PBBs PBDEs	BL BL BL IN --- ---	--- --- --- ND --- ---	Comply Comply Comply Comply --- ---	04 Mar 2016

Part No.	Part Description	BOM No.	Restricted Substances	Results of EDXRF (1)	Result of Wet Chemical Testing(2) (mg/kg)	Conclusion on EU RoHS	Sample Submitted / Resubmitted Date
25	White plastic ring (on No.23)	-	Pb Cd Hg Cr(VI)▼ PBBs PBDEs	BL BL BL BL BL BL	--- --- --- --- --- ---	Comply Comply Comply Comply Comply Comply	04 Mar 2016
26	White plastic ring (small) (on No.23)	-	Pb Cd Hg Cr(VI)▼ PBBs PBDEs	BL BL BL BL BL BL	--- --- --- --- --- ---	Comply Comply Comply Comply Comply Comply	04 Mar 2016
27	Blue translucent plastic part (on No.23)	-	Pb Cd Hg Cr(VI)▼ PBBs PBDEs	BL BL BL BL BL BL	--- --- --- --- --- ---	Comply Comply Comply Comply Comply Comply	04 Mar 2016
28	Green rubber ring (on No.23)	-	Pb Cd Hg Cr(VI)▼ PBBs PBDEs	BL BL BL BL BL BL	--- --- --- --- --- ---	Comply Comply Comply Comply Comply Comply	04 Mar 2016

Part No.	Part Description	BOM No.	Restricted Substances	Results of EDXRF (1)	Result of Wet Chemical Testing(2) (mg/kg)	Conclusion on EU RoHS	Sample Submitted / Resubmitted Date
29	Silvery metal screw (big) (on No.23)	-	Pb Cd Hg Cr(VI)▼ PBBs PBDEs	BL BL BL IN --- ---	--- --- --- ND --- ---	Comply Comply Comply Comply --- ---	04 Mar 2016
30	Silvery metal screw (on No.23)	-	Pb Cd Hg Cr(VI)▼ PBBs PBDEs	BL BL BL IN --- ---	--- --- --- ND --- ---	Comply Comply Comply Comply --- ---	04 Mar 2016
31	Golden metal ring (in No.24)	-	Pb Cd Hg Cr(VI)▼ PBBs PBDEs	BL BL BL BL --- ---	--- --- --- --- --- ---	Comply Comply Comply Comply --- ---	04 Mar 2016
32	Silvery metal shaft (in No.24)	-	Pb Cd Hg Cr(VI)▼ PBBs PBDEs	BL BL BL BL --- ---	--- --- --- --- --- ---	Comply Comply Comply Comply --- ---	04 Mar 2016

Part No.	Part Description	BOM No.	Restricted Substances	Results of EDXRF (1)	Result of Wet Chemical Testing(2) (mg/kg)	Conclusion on EU RoHS	Sample Submitted / Resubmitted Date
33	Beige plastic cover (on No.24)	-	Pb Cd Hg Cr(VI)▼ PBBs PBDEs	BL BL BL BL BL BL	--- --- --- --- --- ---	Comply Comply Comply Comply Comply Comply	04 Mar 2016
34	White plastic (wire insulation) (connected w/ No.33)	-	Pb Cd Hg Cr(VI)▼ PBBs PBDEs	BL BL BL BL BL BL	--- --- --- --- --- ---	Comply Comply Comply Comply Comply Comply	04 Mar 2016
35	Green plastic (wire insulation) (connected w/ No.33)	-	Pb Cd Hg Cr(VI)▼ PBBs PBDEs	BL BL BL BL BL BL	--- --- --- --- --- ---	Comply Comply Comply Comply Comply Comply	04 Mar 2016
36	Copper-colored metal ring (in No.33)	-	Pb Cd Hg Cr(VI)▼ PBBs PBDEs	BL BL BL BL --- ---	--- --- --- --- --- ---	Comply Comply Comply Comply --- ---	04 Mar 2016

Part No.	Part Description	BOM No.	Restricted Substances	Results of EDXRF (1)	Result of Wet Chemical Testing(2) (mg/kg)	Conclusion on EU RoHS	Sample Submitted / Resubmitted Date
37	White plastic part (in No.33)	-	Pb Cd Hg Cr(VI)▼ PBBs PBDEs	BL BL BL BL BL BL	--- --- --- --- --- ---	Comply Comply Comply Comply Comply Comply	04 Mar 2016
38	Copper-colored metal sheet (in No.33)	-	Pb Cd Hg Cr(VI)▼ PBBs PBDEs	BL BL BL BL --- ---	--- --- --- --- --- ---	Comply Comply Comply Comply --- ---	04 Mar 2016
39	Silvery metal solder (on No.38)	-	Pb Cd Hg Cr(VI)▼ PBBs PBDEs	BL BL BL BL --- ---	--- --- --- --- --- ---	Comply Comply Comply Comply --- ---	04 Mar 2016
40	Golden metal ring (on No.32)	-	Pb Cd Hg Cr(VI)▼ PBBs PBDEs	BL BL BL BL --- ---	--- --- --- --- --- ---	Comply Comply Comply Comply --- ---	04 Mar 2016

Part No.	Part Description	BOM No.	Restricted Substances	Results of EDXRF (1)	Result of Wet Chemical Testing(2) (mg/kg)	Conclusion on EU RoHS	Sample Submitted / Resubmitted Date
41	White plastic sheet (on No.32)	-	Pb Cd Hg Cr(VI)▼ PBBs PBDEs	BL BL BL BL BL BL	--- --- --- --- --- ---	Comply Comply Comply Comply Comply Comply	04 Mar 2016
42	Beige plastic part (on No.32)	-	Pb Cd Hg Cr(VI)▼ PBBs PBDEs	BL BL BL BL IN IN	--- --- --- --- ND ND	Comply Comply Comply Comply Comply Comply	04 Mar 2016
43	Silvery metal sheet (on No.32)	-	Pb Cd Hg Cr(VI)▼ PBBs PBDEs	BL BL BL BL --- ---	--- --- --- --- --- ---	Comply Comply Comply Comply --- ---	04 Mar 2016
44	Silvery metal solder (on No.43)	-	Pb Cd Hg Cr(VI)▼ PBBs PBDEs	BL BL BL BL --- ---	--- --- --- --- --- ---	Comply Comply Comply Comply --- ---	04 Mar 2016

Part No.	Part Description	BOM No.	Restricted Substances	Results of EDXRF (1)	Result of Wet Chemical Testing(2) (mg/kg)	Conclusion on EU RoHS	Sample Submitted / Resubmitted Date
45	Green "PCB" (in No.8)	-	Pb Cd Hg Cr(VI)▼ PBBs PBDEs	BL BL BL BL IN IN	--- --- --- --- ND ND	Comply Comply Comply Comply Comply Comply	04 Mar 2016
46	Black plastic cover w/ golden printing (on No.8)	-	Pb Cd Hg Cr(VI)▼ PBBs PBDEs	BL BL BL BL BL BL	--- --- --- --- --- ---	Comply Comply Comply Comply Comply Comply	04 Mar 2016
47	Black plastic part (on No.46)	-	Pb Cd Hg Cr(VI)▼ PBBs PBDEs	BL BL BL BL BL BL	--- --- --- --- --- ---	Comply Comply Comply Comply Comply Comply	04 Mar 2016
48	White plastic part (on No.47)	-	Pb Cd Hg Cr(VI)▼ PBBs PBDEs	BL BL BL BL BL BL	--- --- --- --- --- ---	Comply Comply Comply Comply Comply Comply	04 Mar 2016

Part No.	Part Description	BOM No.	Restricted Substances	Results of EDXRF (1)	Result of Wet Chemical Testing(2) (mg/kg)	Conclusion on EU RoHS	Sample Submitted / Resubmitted Date
49	Black rubber ring (on No.48)	-	Pb Cd Hg Cr(VI)▼ PBBs PBDEs	BL BL BL BL BL BL	--- --- --- --- --- ---	Comply Comply Comply Comply Comply Comply	04 Mar 2016
50	Silvery metal screw (in No.48)	-	Pb Cd Hg Cr(VI)▼ PBBs PBDEs	BL BL BL IN --- ---	--- --- --- ND --- ---	Comply Comply Comply Comply --- ---	04 Mar 2016
51	Black plastic part (in No.8)	-	Pb Cd Hg Cr(VI)▼ PBBs PBDEs	BL BL BL BL BL BL	--- --- --- --- --- ---	Comply Comply Comply Comply Comply Comply	04 Mar 2016
52	Black plastic switch (on No.8)	-	Pb Cd Hg Cr(VI)▼ PBBs PBDEs	BL BL BL BL BL BL	--- --- --- --- --- ---	Comply Comply Comply Comply Comply Comply	04 Mar 2016

Part No.	Part Description	BOM No.	Restricted Substances	Results of EDXRF (1)	Result of Wet Chemical Testing(2) (mg/kg)	Conclusion on EU RoHS	Sample Submitted / Resubmitted Date
53	Silvery metal solder (on No.45)	-	Pb Cd Hg Cr(VI)▼ PBBs PBDEs	BL BL BL BL --- ---	--- --- --- --- --- ---	Comply Comply Comply Comply --- ---	04 Mar 2016
54	Black body (U2 on No.45)	-	Pb Cd Hg Cr(VI)▼ PBBs PBDEs	BL BL BL BL IN IN	--- --- --- --- ND ND	Comply Comply Comply Comply Comply Comply	04 Mar 2016
55	Black body (U1 on No.45)	-	Pb Cd Hg Cr(VI)▼ PBBs PBDEs	BL BL BL BL BL BL	--- --- --- --- --- ---	Comply Comply Comply Comply Comply Comply	04 Mar 2016
56	Silvery metal screw (on No.45)	-	Pb Cd Hg Cr(VI)▼ PBBs PBDEs	BL BL BL IN --- ---	--- --- --- ND --- ---	Comply Comply Comply Comply --- ---	04 Mar 2016

Part No.	Part Description	BOM No.	Restricted Substances	Results of EDXRF (1)	Result of Wet Chemical Testing(2) (mg/kg)	Conclusion on EU RoHS	Sample Submitted / Resubmitted Date
57	Black plastic shell (on No.45)	-	Pb Cd Hg Cr(VI)▼ PBBs PBDEs	BL BL BL BL BL BL	--- --- --- --- --- ---	Comply Comply Comply Comply Comply Comply	04 Mar 2016
58	Transparent body (LED) (connected w/ No.45)	-	Pb Cd Hg Cr(VI)▼ PBBs PBDEs	BL BL BL BL IN IN	--- --- --- --- ND ND	Comply Comply Comply Comply Comply Comply	04 Mar 2016
59	Black plastic (wire insulation) (connected w/ No.45)	-	Pb Cd Hg Cr(VI)▼ PBBs PBDEs	BL BL BL BL BL BL	--- --- --- --- --- ---	Comply Comply Comply Comply Comply Comply	04 Mar 2016
60	Red plastic (wire insulation) (connected w/ No.45)	-	Pb Cd Hg Cr(VI)▼ PBBs PBDEs	BL BL BL BL BL BL	--- --- --- --- --- ---	Comply Comply Comply Comply Comply Comply	04 Mar 2016

Part No.	Part Description	BOM No.	Restricted Substances	Results of EDXRF (1)	Result of Wet Chemical Testing(2) (mg/kg)	Conclusion on EU RoHS	Sample Submitted / Resubmitted Date
61	Black plastic w/ white printing (outer shell) (on No.45)	-	Pb Cd Hg Cr(VI)▼ PBBs PBDEs	BL BL BL BL BL BL	--- --- --- --- --- ---	Comply Comply Comply Comply Comply Comply	04 Mar 2016
62	Silvery metal shell (on No.45)	-	Pb Cd Hg Cr(VI)▼ PBBs PBDEs	BL BL BL BL --- ---	--- --- --- --- --- ---	Comply Comply Comply Comply --- ---	04 Mar 2016
63	Black plastic (wire insulation) (connected w/ No.58)	-	Pb Cd Hg Cr(VI)▼ PBBs PBDEs	BL BL BL BL BL BL	--- --- --- --- --- ---	Comply Comply Comply Comply Comply Comply	04 Mar 2016
64	Red plastic (wire insulation) (connected w/ No.58)	-	Pb Cd Hg Cr(VI)▼ PBBs PBDEs	BL BL BL BL BL BL	--- --- --- --- --- ---	Comply Comply Comply Comply Comply Comply	04 Mar 2016

Part No.	Part Description	BOM No.	Restricted Substances	Results of EDXRF (1)	Result of Wet Chemical Testing(2) (mg/kg)	Conclusion on EU RoHS	Sample Submitted / Resubmitted Date
65	Black plastic (heat shrinkable tube) (on No.64)	-	Pb Cd Hg Cr(VI)▼ PBBs PBDEs	BL BL BL BL BL BL	--- --- --- --- --- ---	Comply Comply Comply Comply Comply Comply	04 Mar 2016
66	Brown plastic sheet (in No.62)	-	Pb Cd Hg Cr(VI)▼ PBBs PBDEs	BL BL BL BL BL BL	--- --- --- --- --- ---	Comply Comply Comply Comply Comply Comply	04 Mar 2016
67	Silvery metal pin (on No.66)	-	Pb Cd Hg Cr(VI)▼ PBBs PBDEs	BL BL BL BL --- ---	--- --- --- --- --- ---	Comply Comply Comply Comply --- ---	04 Mar 2016
68	Silvery metal spring (in No.62)	-	Pb Cd Hg Cr(VI)▼ PBBs PBDEs	BL BL BL IN --- ---	--- --- --- ND --- ---	Comply Comply Comply Comply --- ---	04 Mar 2016

Part No.	Part Description	BOM No.	Restricted Substances	Results of EDXRF (1)	Result of Wet Chemical Testing(2) (mg/kg)	Conclusion on EU RoHS	Sample Submitted / Resubmitted Date
69	Silvery metal bead (in No.62)	-	Pb Cd Hg Cr(VI)▼ PBBs PBDEs	BL BL BL IN --- ---	--- --- --- ND --- ---	Comply Comply Comply Comply --- ---	04 Mar 2016
70	Black plastic switch (on No.62)	-	Pb Cd Hg Cr(VI)▼ PBBs PBDEs	BL BL BL BL BL BL	--- --- --- --- --- ---	Comply Comply Comply Comply Comply Comply	04 Mar 2016

Remark :

(1) (a) There are the results on total Br while test items on restricted substances are PBBs and PBDEs. There is the result on total Cr while test item on restricted substances is Cr(VI).

(b) Results are obtained by EDXRF for primary screening, and further chemical testing by ICP-OES (for Cd, Pb, Hg), UV-Vis (for Cr(VI)) and GC-MS (for PBBs, PBDEs) is recommended to be performed, if the concentration exceeds the below warning value according to IEC62321-3-1:2013 (unit: mg/kg).

Element	Polymer	Metal	Composite Materials
Cd	$BL \leq (70-3\sigma) < X < (130+3\sigma) \leq OL$	$BL \leq (70-3\sigma) < X < (130+3\sigma) \leq OL$	$LOD < X < (150+3\sigma) \leq OL$
Pb	$BL \leq (700-3\sigma) < X < (1300+3\sigma) \leq OL$	$BL \leq (700-3\sigma) < X < (1300+3\sigma) \leq OL$	$BL \leq (500-3\sigma) < X < (1500+3\sigma) \leq OL$
Hg	$BL \leq (700-3\sigma) < X < (1300+3\sigma) \leq OL$	$BL \leq (700-3\sigma) < X < (1300+3\sigma) \leq OL$	$BL \leq (500-3\sigma) < X < (1500+3\sigma) \leq OL$
Br	$BL \leq (300-3\sigma) < X$	--	$BL \leq (250-3\sigma) < X$
Cr	$BL \leq (700-3\sigma) < X$	$BL \leq (700-3\sigma) < X$	$BL \leq (500-3\sigma) < X$

(c) BL = Below Limit, OL = Over Limit, IN = Inconclusive, LOD = Limit of Detection, -- = Not regulated.

(d) The XRF screening test for RoHS elements - The reading may be different to the actual content in the sample be of non-uniformity composition.

(2) (a) mg/kg = 0.0001%, MDL = Method detection Limit, ND = Not Detected (<MDL), --- = Not conducted, - = Without BOM.

(b) Unit and MDL in wet chemical test

Test Item	Pb	Cd	Hg
Unit	mg/kg	mg/kg	mg/kg
MDL	10	10	10

The MDL for single compound of PBBs and PBDEs is 100 mg/kg,

MDL of Cr(VI) for polymer and composite sample is 10 mg/kg,

MDL of Cr(VI) for metal sample is 0.10 µg/cm².

(c) ▼ =Metal sample

- a. The sample is positive for CrVI if the CrVI concentration is greater than 0.13 µg/cm².
The sample coating is considered to contain CrVI
- b. The sample is negative for CrVI if CrVI is ND (concentration less than 0.10 µg/cm²).
The coating is considered a non-CrVI based coating
- c. The result between 0.10 µg/cm² and 0.13 µg/cm² is considered to be inconclusive
- unavoidable coating variations may influence the determination

Information on storage conditions and production date of the tested sample is unavailable and thus Cr(VI) results represent status of the sample at the time of testing.

IEC 62321 series is equivalent to EN 62321 series

<http://www.cenelec.eu/dyn/www/f?p=104:30:1742232870351101:::FSP_ORG_ID,FSP_LANG_ID:1258637,25>



This document is issued by the Company subject to its General Conditions of Service printed overleaf, available on request or accessible at <http://www.sgs.com/en/Terms-and-Conditions.aspx> and, for electronic format documents, subject to Terms and Conditions for Electronic Documents at <http://www.sgs.com/en/Terms-and-Conditions/Terms-e-Documents.aspx>. Attention is drawn to the limitation of liability, indemnification and jurisdiction issues defined therein. Any holder of this document is advised that information contained hereon reflects the Company's findings at the time of its intervention only and within the limits of Client's instructions, if any. The Company's sole responsibility is to its Client and this document does not exonerate parties to a transaction from exercising all their rights and obligations under the transaction documents. This document cannot be reproduced except in full, without prior written approval of the Company. Any unauthorized alteration, forgery or falsification of the content or appearance of this document is unlawful and offenders may be prosecuted to the fullest extent of the law. Unless otherwise stated the results shown in this test report refer only to the sample(s) tested.

Attention: To check the authenticity of testing /inspection report & certificate, please contact us at telephone: (86-755) 8307 1443, or email: CN.Doccheck@sgs.com

198 Kezhu Road, Sci-Tech Park Guangzhou Economic & Technology Development District, Guangzhou, China 510663 t (86-20) 82155555 f (86-20) 82075113 www.sgsgroup.com.cn
中国·广州·经济技术开发区科学城科珠路198号 邮编: 510663 t (86-20) 82155555 f (86-20) 82075113 e sgs.china@sgs.com

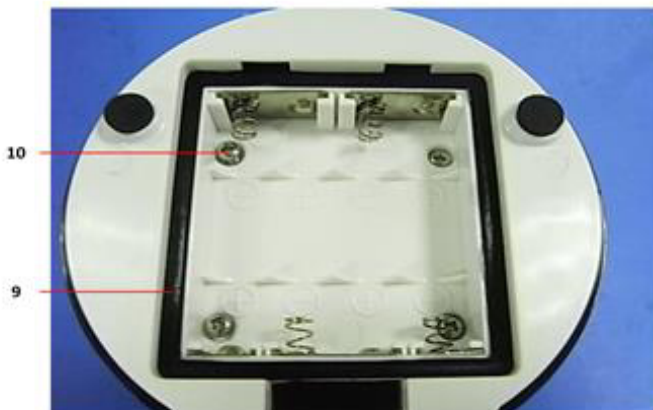
Sample photo:



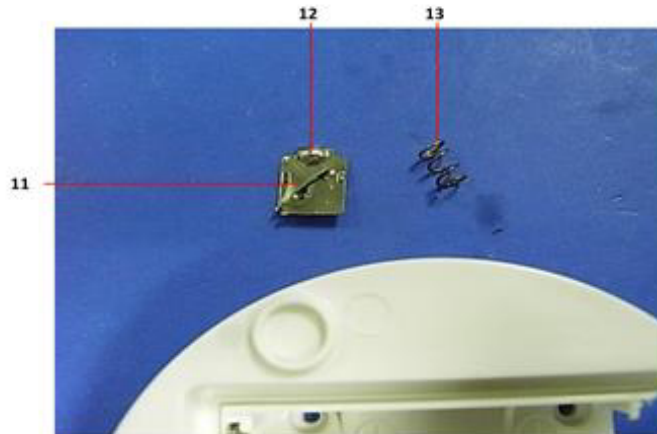
CANEC1603086301



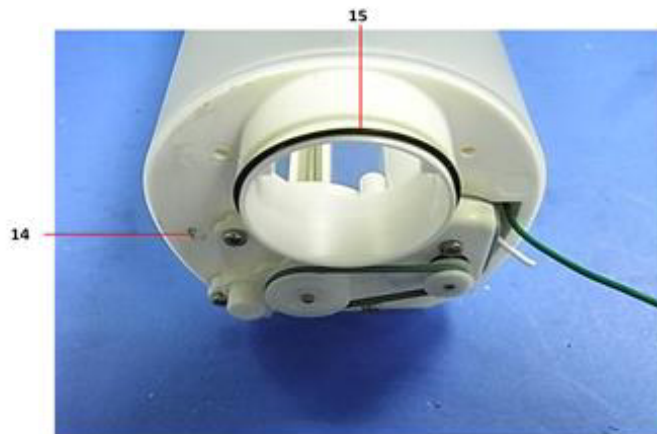
CANEC1603086301



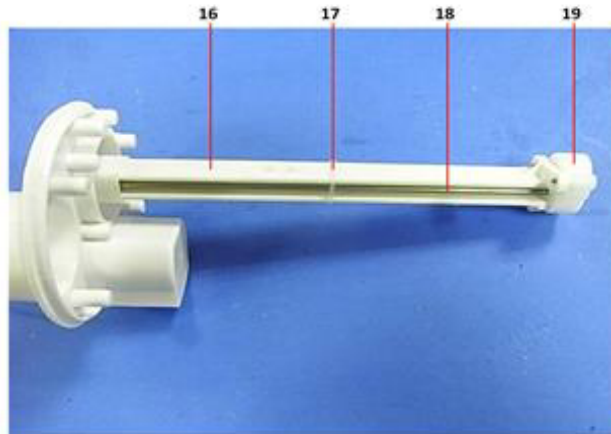
CANEC1603086301



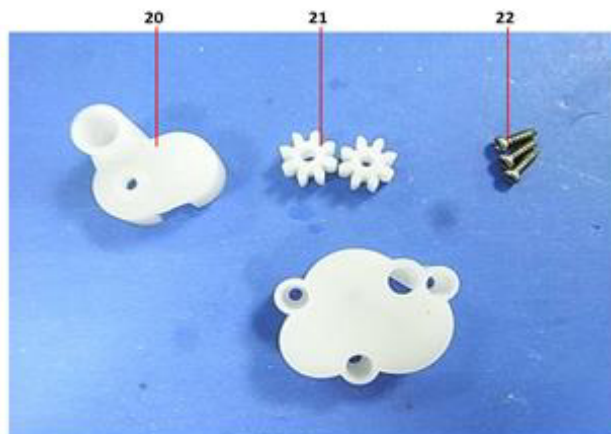
CANEC1603086301



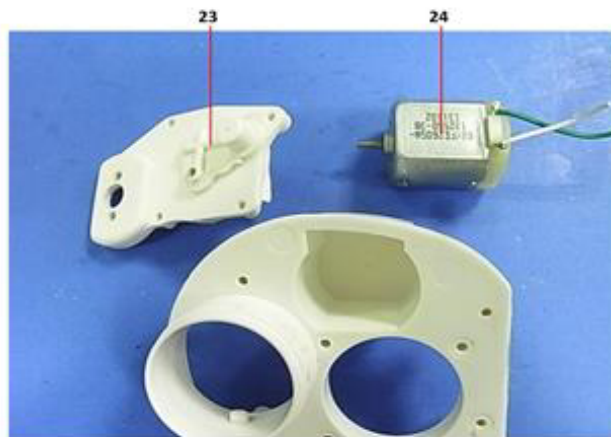
CANEC1603086301



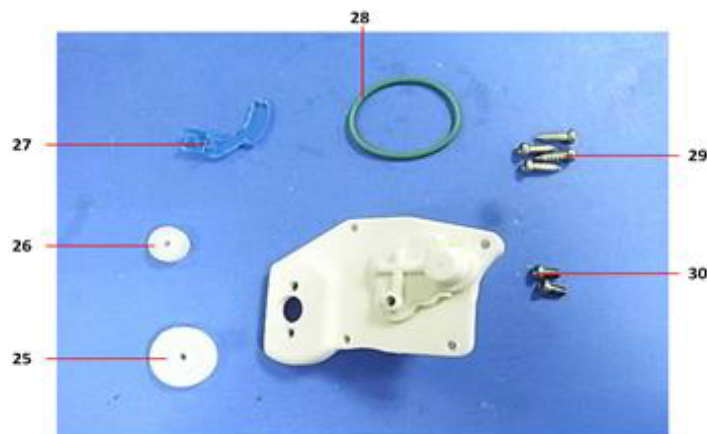
CANEC1603086301



CANEC1603086301



CANEC1603086301

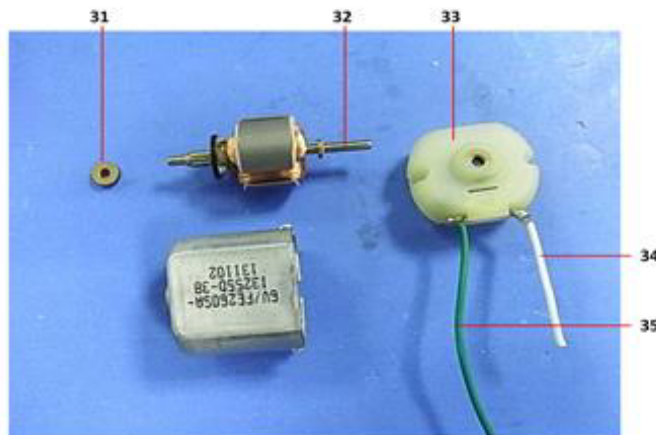


This document is issued by the Company subject to its General Conditions of Service printed overleaf, available on request or accessible at <http://www.sgs.com/en/Terms-and-Conditions.aspx> and, for electronic format documents, subject to Terms and Conditions for Electronic Documents at <http://www.sgs.com/en/Terms-and-Conditions/Terms-e-Document.aspx>. Attention is drawn to the limitation of liability, indemnification and jurisdiction issues defined therein. Any holder of this document is advised that information contained hereon reflects the Company's findings at the time of its intervention only and within the limits of Client's instructions, if any. The Company's sole responsibility is to its Client and this document does not exonerate parties to a transaction from exercising all their rights and obligations under the transaction documents. This document cannot be reproduced except in full, without prior written approval of the Company. Any unauthorized alteration, forgery or falsification of the content or appearance of this document is unlawful and offenders may be prosecuted to the fullest extent of the law. Unless otherwise stated the results shown in this test report refer only to the sample(s) tested.

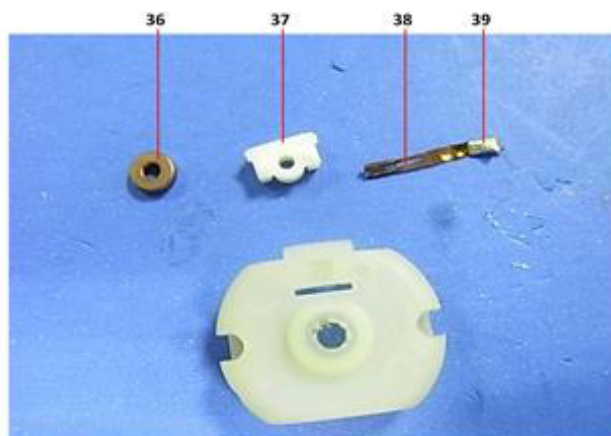
Attention: To check the authenticity of testing /inspection report & certificate, please contact us at telephone: (86-755) 8307 1443, or email: CN.Doccheck@sgs.com

198 Kezhu Road, Sciencetech Park Guangzhou Economic & Technology Development District, Guangzhou, China 510663 t (86-20) 82155555 f (86-20) 82075113 www.sgsgroup.com.cn
中国·广州·经济技术开发区科学城科珠路198号 邮编: 510663 t (86-20) 82155555 f (86-20) 82075113 e sgs.china@sgs.com

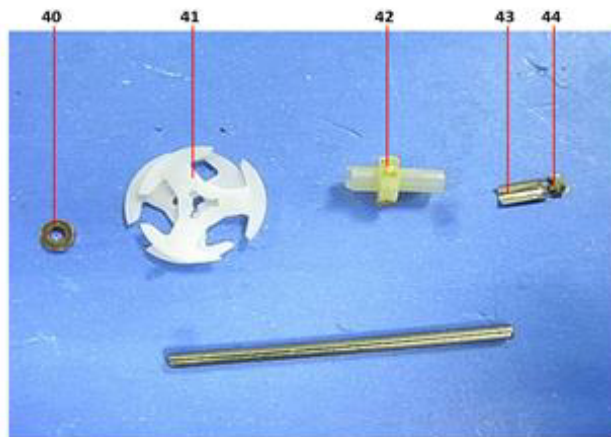
CANEC1603086301



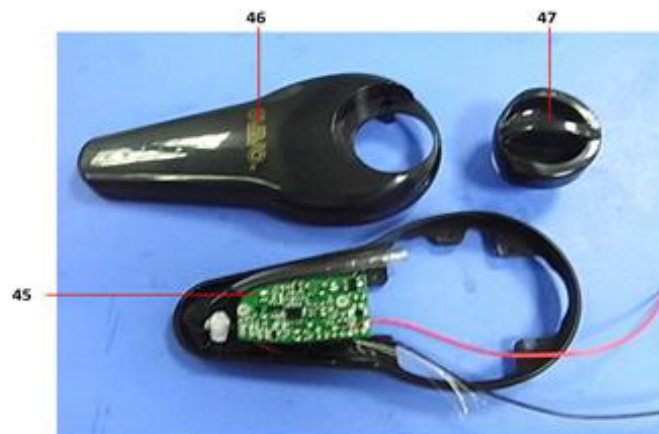
CANEC1603086301



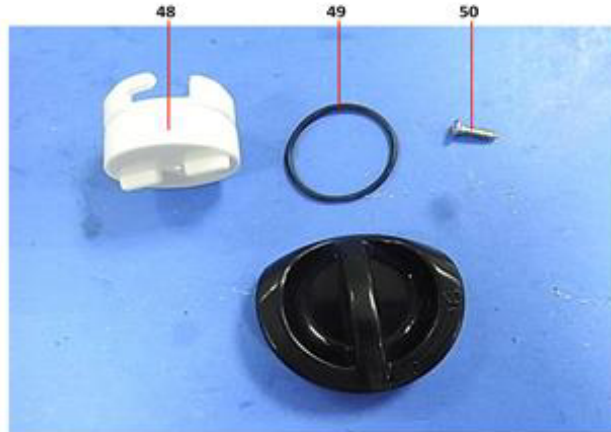
CANEC1603086301



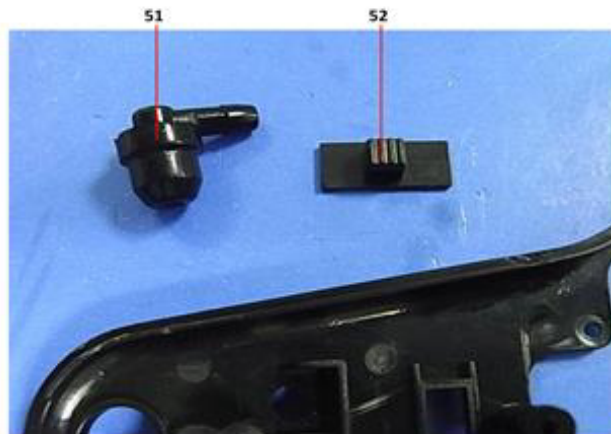
CANEC1603086301



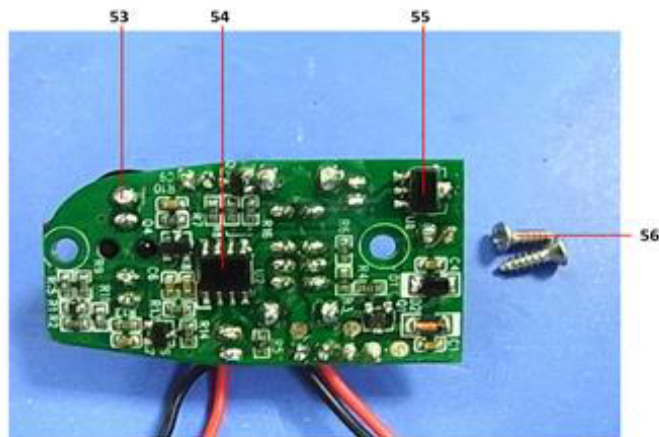
CANEC1603086301



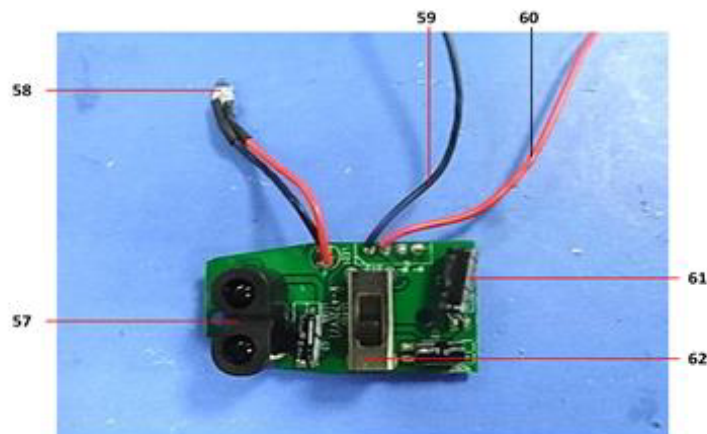
CANEC1603086301

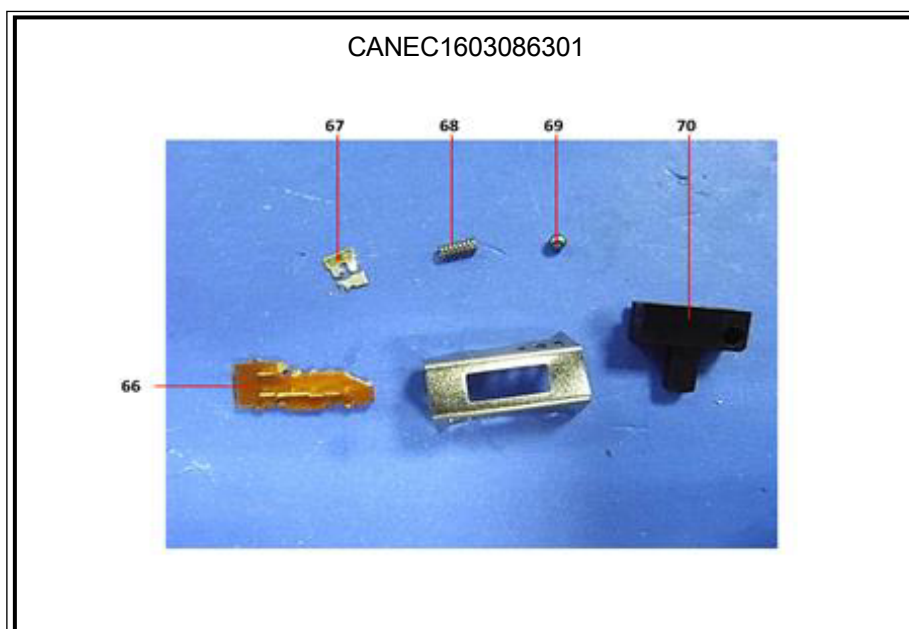
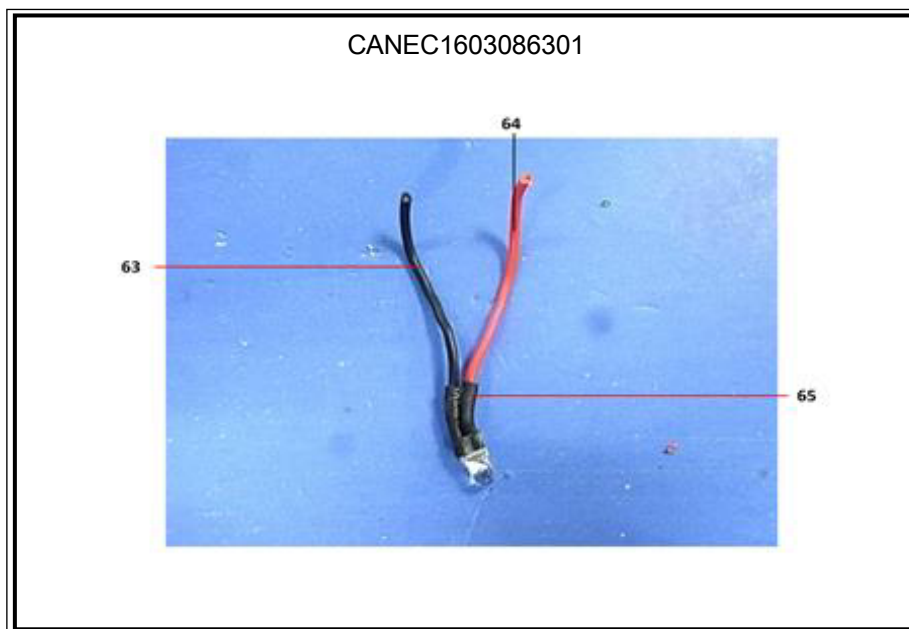


CANEC1603086301



CANEC1603086301





SGS authenticate the photo on original report only

*** End of Report ***