

Test Report No.: 143092018c 002

Page 1 of 6

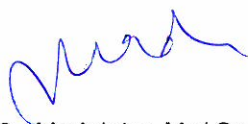
Client: SHENZHEN SVAVO BATHROOM PRODUCTS CO., LTD.
No.4 Factory, Xiuwu Industrial Estate, Pingshan Street, Longgang District, Shenzhen**Test item(s):** Auto Soap Dispenser**Identification/
Model No(s):** AUTO SOAP DISPENSER
MODEL NO.: V-470**Receipt No.:** 00090603157**Sample
Receiving date:** 03 Jun. 2009**Delivery condition:** Apparent good, Samples tested as received**Test specification:****Test result:**

According to Corrigendum to Regulation (EC) no.1907/2006 Article 7(2) and 33, concerning the Registration, Evaluation, Authorisation and Restriction of Chemicals (REACH) Refer to page 2-6

Risk Analysis of Articles: Substances of Very High Concern (SVHC)
Candidate List subject to Authorisation

Other Information:

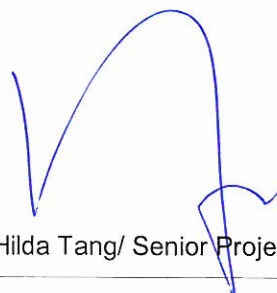
Our reference no. of this report: 143092018c 001

Checked by:

22 Jul. 2009 Madeleine Ma/ Senior Project Chemist

Date

Name/Position

Reviewed by:

22 Jul. 2009 Hilda Tang/ Senior Project Manager

Date

Name/Position

Test result is drawn according to the kind and extent of tests performed.

This test report relates to the a. m. test sample. Without permission of the test center this test report is not permitted to be duplicated in extracts. This test report does not entitle to carry any safety mark on this or similar products.

Product Classification

With reference to Corrigendum to Regulation (EC) no.1907/2006, this product is classified as:

<input checked="" type="checkbox"/>	Article does not contain substances released by the product under normal or reasonably foreseeable conditions of use
<input type="checkbox"/>	Article contains substances released by the product under normal or reasonably foreseeable conditions of use
<input type="checkbox"/>	Preparation

Material list

Item: AUTO SOAP DISPENSER
MODEL NO.: V-470

Material No.	Material	Color	Location
1	plastic	black / transparent	Refer to photo
2	plastic with metallic plating and plastic parts	silver / black / blue	Refer to photo
3	rubber band	black	Refer to photo
4	plastic	white	Refer to photo
5	plastic	transparent	Refer to photo
6	metal	silver	Refer to photo
7	metal	silver	Refer to photo
8	metal	silver	Refer to photo
9	metal	silver	Refer to photo
10	metal	silver	Refer to photo
11	metal	silver	Refer to photo
12	Elec. Components	multi-colour	Refer to photo
13	cable wire	multi-colour	Refer to photo
14	Elec. Components	multi-colour	Refer to photo

Test results**1. Screening of SVHC Candidate List Subject to Authorisation**

Test Method: 1) ICP-Screening: Test portion is digested with acid and assisted with microwave, the elements are analyzed by ICP-OES.

2) GC-MS Screening: Test portion is extracted with organic solvent and analyzed by GC-MS.

Test period: 04 Jun. 2009 – 10 Jun. 2009

Test No.	Material No.	Results (%) ⁽³⁾	Remark
1	1+2+3+4+5	n.d.	-
2	6	the theoretical content of Cobalt(2+) dichloride = 0.31%	(6)
3	7	the theoretical content of Cobalt(2+) dichloride = 0.32%	(6)
4	8	the theoretical content of Cobalt(2+) dichloride = 0.37%	(6)
5	9	the theoretical content of Cobalt(2+) dichloride = 0.25%	(6)
6	10	n.d.	-
7	11	n.d.	-
8	12	n.d.	-
9	13	DEHP: 0.02%; SCCP: 8.00%	(4),(5)
10	14	n.d.	-

Test Report No.: 143092018c 002

Page 4 of 6

Substance*	CAS No.	Reporting limit (%)
4,4'-Methylenedianiline	101-77-9	0.01
Benzylbutylphthalate (BBP)	85-68-7	0.01
Di(2-ethylhexyl)phthalate (DEHP)	117-81-7	0.01
Dibutylphthalate (DBP)	84-74-2	0.01
Anthracene	120-12-7	0.01
HBCDD/ 1,3,5,7,9,11-HBCDD	25637-99-4/3194-55-6	0.01
5-Tert-butyl-2,4,6-trinitro-m-xylene (MX)	81-15-2	0.01
Short chain chlorinated paraffins (C10-C13) (SCCP)	85535-84-8	0.01
Bis(tributyltin) oxide, hexabutyldistannoxane (TBTO)	56-35-9	0.01
Triethyl arsenate ⁽¹⁾	15606-95-8	0.01
Diarsenic pentoxide ⁽¹⁾	1303-28-2	0.01
Diarsenic trioxide ⁽¹⁾	1327-53-3	0.01
Lead hydrogen arsenate ⁽¹⁾	7784-40-9	0.01
Cobalt(2+) dichloride ⁽¹⁾	7646-79-9	0.01
Sodium dichromate, dihydrate ⁽²⁾	7789-12-0	0.01

Remark:

- (1) The substances are tested in term of its respective elements only (eg. As, Pb). The actual concentration of its compound cannot be confirmed.
- (2) The substances are tested in terms of Cr (VI)
- (3) Single substance with an amount of < 0.01% were not considered by the calculation of the sum.
In the case of all substances according to table were not detected, the result is stated n.d.
- (4) The content DEHP is confirmed, please refer to page 5.
- (5) The content SCCP is confirmed, please refer to page 5.
- (6) The content Cobalt(2+) dichloride is calculated, please refer to page 5.

2. Concentration of Detected SVHC in Article

Weight of complete product (without packaging): 420 g

Material No.	Material	Weight (g)	Amount of DEHP/ material (g)
13	cable wire	4.96	0.0010
Total Amount of SVHC (DEHP)			0.0010

Concentration of DEHP in an article [%] = (0.0010 g/ 420 g) x 100 = 0.0002 %

Material No.	Material	Weight (g)	Amount of SCCP/ material (g)
13	cable wire	4.96	0.3968
Total Amount of SVHC (SCCP)			0.3968

Concentration of SCCP in an article [%] = (0.3968 g/ 420 g) x 100 = 0.0945 %

Material No.	Material	Weight (g)	Amount of Cobalt(2+) dichloride / material (g)
6	metal	0.95	0.0029
7	metal	0.44	0.0014
8	metal	1.92	0.0071
9	metal	6.63	0.0166
Total Amount of SVHC (Cobalt(2+) dichloride)			0.0280

Calculated Concentration of Cobalt(2+) dichloride in an article [%] = (0.0280 g/ 420 g) x 100 = 0.0067 %

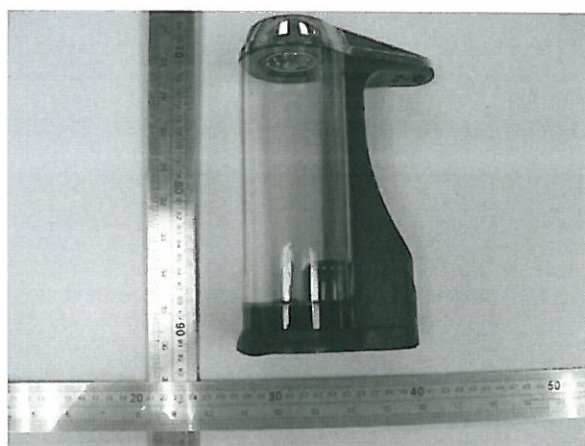
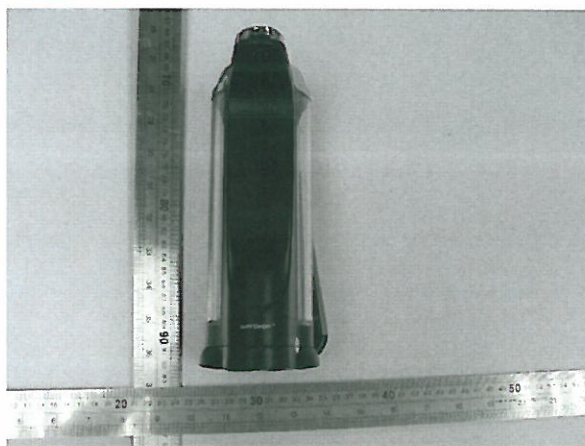
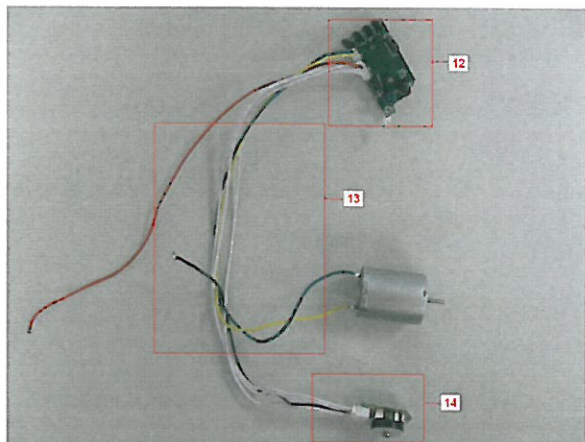
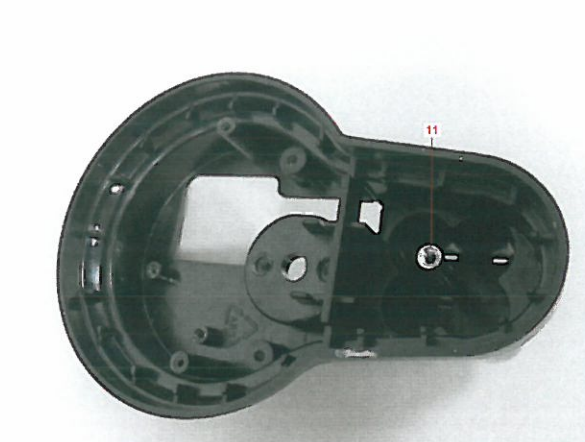
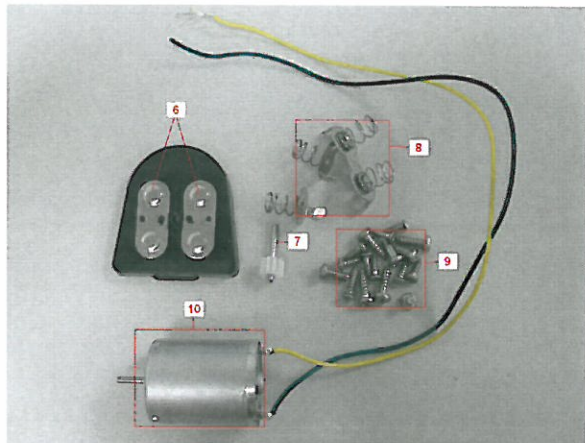
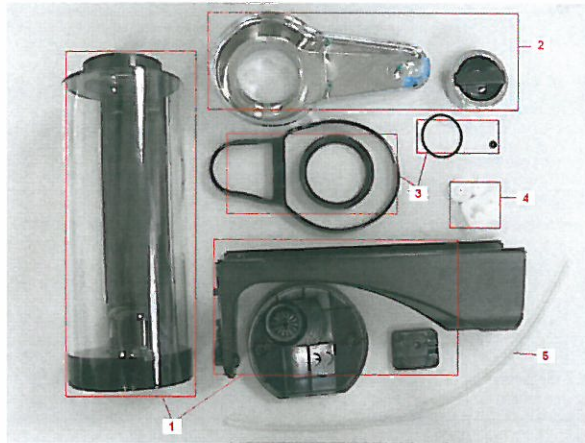
Conclusion:

The detected SVHC (DEHP) concentration is <0.1%, importer has neither to communicate information down the supply chain according to article. 33 nor to notify acc. to article 7(2) of REACH.

The detected SVHC (SCCP) concentration is <0.1%, importer has neither to communicate information down the supply chain according to article. 33 nor to notify acc. to article 7(2) of REACH.

The calculated SVHC (Cobalt(2+) dichloride) concentration is <0.1%, importer has neither to communicate information down the supply chain according to article. 33 nor to notify acc. to article 7(2) of REACH.

Sample Photos:



---END---