



## Verification Report

No.: GZ0901000579/CHEM

Date: FEB 09, 2009

Page 1 of 34

SHENZHEN SVAVO BATHROOM PRODUCTS CO., LTD  
NO.4 FACTORY, XINWU VILLAGE, SHABO, PINGSHAN STREET, LONGGANG DISTRICT, SHENZHEN

Sample Description : Automatic soap dispenser  
SGS Ref No. : SZ11535463-2.1  
Model No. (P.O No.) : V-450  
Verification Period : JAN 05, 2009 TO FEB 09, 2009

Verification Requested : With reference to RoHS Directive 2002/95/EC, and its amendment directives

Verification Method

1. Review was performed for the samples disjointed from the submitted articles and the related test reports submitted by the Applicant
2. Tests was performed for the samples indicated by the photos in the report with test methods reference to IEC 62321 :2008: Procedures for the Determination of Levels of Six Regulated substances in Electrotechnical Products
  - (1) Screening by XRF Spectroscopy
  - (2) Wet Chemical Test Method
    - a. Determination of Lead by ICP and AAS.
    - b. Determination of Hexavalent Chromium by Colorimetric Method.
    - c. Determination of PBBs and PBDEs by GC/MS.

Verification Results : Please refer to next page

Verification Conclusion : Based on the review of previous reports and verification results of the submitted samples, the results **comply with** the RoHS Directive 2002/95/EC and its subsequent amendments.

Signed for and on behalf of  
SGS-CSTC Ltd.

Huang Fang, Sunny  
Sr. Engineer

This document is issued by the Company under its General Conditions of Service printed overleaf or available on request and accessible at [http://www.sgs.com/terms\\_and\\_conditions.htm](http://www.sgs.com/terms_and_conditions.htm). Attention is drawn to the limitation of liability, indemnification and jurisdiction issues defined therein. Any holder of this document is advised that information contained hereon reflects the Company's findings at the time of its intervention only and within the limits of Client's instructions, if any. The Company's sole responsibility is to its Client and this document does not generate parties to a transaction from exercising all their rights and obligations under the transaction documents. Any unauthorized alteration, forgery or falsification of the content or appearance of this document is unlawful and offenders may be prosecuted to the fullest extent of the law. Unless otherwise stated, the results shown in this test report refer only to the sample(s) tested. This document cannot be reproduced except in full, without prior approval of the Company.



SGS - Standards Technics Services Co., Ltd  
Guangzhou Testing Service Center Chemical Laboratory

130 Kazhu Road, Sointech Park, Guangzhou Economic & Technology Development District, Guangzhou, China 510663 | (86-20) 82155555 | (86-20) 82075125 | www.cn.sgs.com  
中国·广州·经济技术开发区科学城科珠路198号 邮编: 510663 | (86-20) 82155555 | (86-20) 82075125 | e: sgs.china@sgs.com

Member of the SGS Group (SGS SA)

Details on Verification

Part No.	Part Name	Restricted Substances	Results of EDXRF <sup>(1)</sup>	No. of Related Test Report	Results in Related Test Report(mg/kg)	Result of Wet Chemical Testing <sup>(2)</sup> (mg/kg)	Conclusion on RoHS	Sample Submitted / Resubmitted Date
1	White plastic (key) (fitting)	Cd	BL	\	\	\	Comply	Jan 05, 2009
		Pb	BL		\	\	Comply	
		Hg	BL		\	\	Comply	
		Cr <sup>6+</sup>	BL		\	\	Comply	
		PBBs	BL		\	\	Comply	
		PBDEs <sup>###</sup>			\	\	Comply	
2	Silvery metal screw (fitting)	Cd	BL	\	\	\	Comply	Jan 05, 2009
		Pb	BL		\	\	Comply	
		Hg	BL		\	\	Comply	
		Cr <sup>6+</sup>	IN		\	Negative	Comply	
		PBBs	---		\	\	\	
		PBDEs <sup>###</sup>			\	\	\	
3	Beige translucent plastic (fitting)	Cd	BL	\	\	\	Comply	Jan 05, 2009
		Pb	BL		\	\	Comply	
		Hg	BL		\	\	Comply	
		Cr <sup>6+</sup>	BL		\	\	Comply	
		PBBs	BL		\	\	Comply	
		PBDEs <sup>###</sup>			\	\	Comply	
4	White plastic shell	Cd	BL	\	\	\	Comply	Jan 05, 2009
		Pb	BL		\	\	Comply	
		Hg	BL		\	\	Comply	
		Cr <sup>6+</sup>	BL		\	\	Comply	
		PBBs	BL		\	\	Comply	
		PBDEs <sup>###</sup>			\	\	Comply	
5	Red translucent plastic (LED cover) (on No.4)	Cd	BL	\	\	\	Comply	Jan 05, 2009
		Pb	BL		\	\	Comply	
		Hg	BL		\	\	Comply	
		Cr <sup>6+</sup>	BL		\	\	Comply	
		PBBs	BL		\	\	Comply	
		PBDEs <sup>###</sup>			\	\	Comply	
6	Lt-blue translucent plastic (connected w/ No.4)	Cd	BL	\	\	\	Comply	Jan 05, 2009
		Pb	BL		\	\	Comply	
		Hg	BL		\	\	Comply	
		Cr <sup>6+</sup>	BL		\	\	Comply	
		PBBs	BL		\	\	Comply	
		PBDEs <sup>###</sup>			\	\	Comply	
7	White plastic (hanging board) (connected w/ No.4)	Cd	BL	\	\	\	Comply	Jan 05, 2009
		Pb	BL		\	\	Comply	
		Hg	BL		\	\	Comply	
		Cr <sup>6+</sup>	BL		\	\	Comply	
		PBBs	BL		\	\	Comply	
		PBDEs <sup>###</sup>			\	\	Comply	

This document is issued by the Company under its General Conditions of Service printed overleaf or available on request and accessible at [http://www.sgs.com/terms\\_and\\_conditions.htm](http://www.sgs.com/terms_and_conditions.htm). Attention is drawn to the limitation of liability, indemnification and jurisdiction issues defined therein. Any holder of this document is advised that information contained hereon reflects the Company's findings at the time of its intervention only and within the limits of Client's instructions, if any. The Company's sole responsibility is to its Client and this document does not generate parties to a transaction from exercising all their rights and obligations under the transaction documents. Any unauthorized alteration, forgery or falsification of the content or appearance of this document is unlawful and offenders may be prosecuted to the fullest extent of the law. Unless otherwise stated, the results shown in this test report refer only to the sample(s) tested. This document cannot be reproduced except in full, without prior approval of the Company.



Part No.	Part Name	Restricted Substances	Results of EDXRF <sup>(1)</sup>	No. of Related Test Report	Results in Related Test Report(mg/kg)	Result of Wet Chemical Testing <sup>(2)</sup> (mg/kg)	Conclusion on RoHS	Sample Submitted / Resubmitted Date
8	Silvery metal screw (on No.7)	Cd	BL	\	\	\	Comply	Jan 05, 2009
		Pb	BL		\	\	Comply	
		Hg	BL		\	\	Comply	
		Cr <sup>6+</sup>	IN		\	Negative	Comply	
		PBBs	---		\	\	\	
		PBDEs <sup>###</sup>	---		\	\	\	
9	Silvery metal screw (on No.4)	Cd	BL	\	\	\	Comply	Jan 05, 2009
		Pb	BL		\	\	Comply	
		Hg	BL		\	\	Comply	
		Cr <sup>6+</sup>	IN		\	Negative	Comply	
		PBBs	---		\	\	\	
		PBDEs <sup>###</sup>	---		\	\	\	
10	Red translucent plastic (LED cover) (rectangle) (on No.4)	Cd	BL	\	\	\	Comply	Jan 05, 2009
		Pb	BL		\	\	Comply	
		Hg	BL		\	\	Comply	
		Cr <sup>6+</sup>	BL		\	\	Comply	
		PBBs	BL		\	\	Comply	
		PBDEs <sup>###</sup>	BL		\	\	Comply	
11	Black plastic (connected w/ No.10)	Cd	BL	\	\	\	Comply	Jan 05, 2009
		Pb	BL		\	\	Comply	
		Hg	BL		\	\	Comply	
		Cr <sup>6+</sup>	BL		\	\	Comply	
		PBBs	BL		\	\	Comply	
		PBDEs <sup>###</sup>	BL		\	\	Comply	
12	Black rubber ring (on No.10)	Cd	BL	\	\	\	Comply	Jan 05, 2009
		Pb	BL		\	\	Comply	
		Hg	BL		\	\	Comply	
		Cr <sup>6+</sup>	BL		\	\	Comply	
		PBBs	BL		\	\	Comply	
		PBDEs <sup>###</sup>	BL		\	\	Comply	
13	White plastic (connected w/ No.6)	Cd	BL	\	\	\	Comply	Jan 05, 2009
		Pb	BL		\	\	Comply	
		Hg	BL		\	\	Comply	
		Cr <sup>6+</sup>	BL		\	\	Comply	
		PBBs	BL		\	\	Comply	
		PBDEs <sup>###</sup>	BL		\	\	Comply	
14	Black rubber ring (on No.13)	Cd	BL	\	\	\	Comply	Jan 05, 2009
		Pb	BL		\	\	Comply	
		Hg	BL		\	\	Comply	
		Cr <sup>6+</sup>	BL		\	\	Comply	
		PBBs	BL		\	\	Comply	
		PBDEs <sup>###</sup>	BL		\	\	Comply	

This document is issued by the Company under its General Conditions of Service printed overleaf or available on request and accessible at [http://www.sgs.com/terms\\_and\\_conditions.htm](http://www.sgs.com/terms_and_conditions.htm). Attention is drawn to the limitation of liability, indemnification and jurisdiction issues defined therein. Any holder of this document is advised that information contained herein reflects the Company's findings at the time of its intervention only and within the limits of Client's instructions, if any. The Company's sole responsibility is to its Client and this document does not generate parties to a transaction from exercising all their rights and obligations under the transaction documents. Any unauthorized alteration, forgery or falsification of the content or appearance of this document is unlawful and offenders may be prosecuted to the fullest extent of the law. Unless otherwise stated, the results shown in this test report refer only to the sample(s) tested. This document cannot be reproduced except in full, without prior approval of the Company.



Part No.	Part Name	Restricted Substances	Results of EDXRF <sup>(1)</sup>	No. of Related Test Report	Results in Related Test Report(mg/kg)	Result of Wet Chemical Testing <sup>(2)</sup> (mg/kg)	Conclusion on RoHS	Sample Submitted / Resubmitted Date
15	Transparent rubber tube (connected w/ No.13)	Cd	BL	\	\	\	Comply	Jan 05, 2009
		Pb	BL		\	\	Comply	
		Hg	BL		\	\	Comply	
		Cr <sup>6+</sup>	BL		\	\	Comply	
		PBBs	BL		\	\	Comply	
		PBDEs <sup>###</sup>			\	\	Comply	
16	White plastic sheet (battery cover) (connected w/ No.4)	Cd	BL	\	\	\	Comply	Jan 05, 2009
		Pb	BL		\	\	Comply	
		Hg	BL		\	\	Comply	
		Cr <sup>6+</sup>	BL		\	\	Comply	
		PBBs	BL		\	\	Comply	
		PBDEs <sup>###</sup>			\	\	Comply	
17	Transparent rubber (on No.16)	Cd	BL	\	\	\	Comply	Jan 05, 2009
		Pb	BL		\	\	Comply	
		Hg	BL		\	\	Comply	
		Cr <sup>6+</sup>	BL		\	\	Comply	
		PBBs	BL		\	\	Comply	
		PBDEs <sup>###</sup>			\	\	Comply	
18	Transparent rubber ring (in No.13)	Cd	BL	\	\	\	Comply	Jan 05, 2009
		Pb	BL		\	\	Comply	
		Hg	BL		\	\	Comply	
		Cr <sup>6+</sup>	BL		\	\	Comply	
		PBBs	BL		\	\	Comply	
		PBDEs <sup>###</sup>			\	\	Comply	
19	Silvery metal screw (on No.13)	Cd	BL	\	\	\	Comply	Jan 05, 2009
		Pb	BL		\	\	Comply	
		Hg	BL		\	\	Comply	
		Cr <sup>6+</sup>	IN		\	Negative	Comply	
		PBBs	---		\	\	Comply	
		PBDEs <sup>###</sup>			\	\	Comply	
20	Silvery metal (motor shell) (in No.4)	Cd	BL	\	\	\	Comply	Jan 05, 2009
		Pb	BL		\	\	Comply	
		Hg	BL		\	\	Comply	
		Cr <sup>6+</sup>	BL		\	\	Comply	
		PBBs	---		\	\	Comply	
		PBDEs <sup>###</sup>			\	\	Comply	
21	Beige plastic (bottom cover) (connected w/ No.20)	Cd	BL	\	\	\	Comply	Jan 05, 2009
		Pb	BL		\	\	Comply	
		Hg	BL		\	\	Comply	
		Cr <sup>6+</sup>	BL		\	\	Comply	
		PBBs	BL		\	\	Comply	
		PBDEs <sup>###</sup>			\	\	Comply	

This document is issued by the Company under its General Conditions of Service printed overleaf or available on request and accessible at [http://www.sgs.com/terms\\_and\\_conditions.htm](http://www.sgs.com/terms_and_conditions.htm). Attention is drawn to the limitation of liability, indemnification and jurisdiction issues defined therein. Any holder of this document is advised that information contained herein reflects the Company's findings at the time of its intervention only and within the limits of Client's instructions, if any. The Company's sole responsibility is to its Client and this document does not generate parties to a transaction from exercising all their rights and obligations under the transaction documents. Any unauthorized alteration, forgery or falsification of the content or appearance of this document is unlawful and offenders may be prosecuted to the fullest extent of the law. Unless otherwise stated, the results shown in this test report refer only to the sample(s) tested. This document cannot be reproduced except in full, without prior approval of the Company.



Part No.	Part Name	Restricted Substances	Results of EDXRF <sup>(1)</sup>	No. of Related Test Report	Results in Related Test Report(mg/kg)	Result of Wet Chemical Testing <sup>(2)</sup> (mg/kg)	Conclusion on RoHS	Sample Submitted / Resubmitted Date
22	Silver-grey metal column (in No.21)	Cd	BL	\	\	\	Comply	Jan 05, 2009
		Pb	BL		\	\	Comply	
		Hg	BL		\	\	Comply	
		Cr <sup>6+</sup>	BL		\	\	Comply	
		PBBs	---		\	\	\	
		PBDEs <sup>##</sup>	---		\	\	\	
23	Silvery metal pin (in No.21)	Cd	BL	\	\	\	Comply	Jan 05, 2009
		Pb	BL		\	\	Comply	
		Hg	BL		\	\	Comply	
		Cr <sup>6+</sup>	BL		\	\	Comply	
		PBBs	---		\	\	\	
		PBDEs <sup>##</sup>	---		\	\	\	
24	White adhesive rubber sheet (on No.23)	Cd	BL	\	\	\	Comply	Jan 05, 2009
		Pb	BL		\	\	Comply	
		Hg	BL		\	\	Comply	
		Cr <sup>6+</sup>	BL		\	\	Comply	
		PBBs	---		\	\	Comply	
		PBDEs <sup>##</sup>	---		\	\	Comply	
25	Silvery metal sheet (connected w/ No.23)	Cd	BL	\	\	\	Comply	Jan 05, 2009
		Pb	BL		\	\	Comply	
		Hg	BL		\	\	Comply	
		Cr <sup>6+</sup>	BL		\	\	Comply	
		PBBs	---		\	\	\	
		PBDEs <sup>##</sup>	---		\	\	\	
26	Silvery metal rod (axis) (in No.20)	Cd	BL	\	\	\	Comply	Jan 05, 2009
		Pb	BL		\	\	Comply	
		Hg	BL		\	\	Comply	
		Cr <sup>6+</sup>	IN		\	Negative	Comply	
		PBBs	---		\	\	\	
		PBDEs <sup>##</sup>	---		\	\	\	
27	White plastic (gear) (on No.26)	Cd	BL	\	\	\	Comply	Jan 05, 2009
		Pb	BL		\	\	Comply	
		Hg	BL		\	\	Comply	
		Cr <sup>6+</sup>	BL		\	\	Comply	
		PBBs	---		\	\	Comply	
		PBDEs <sup>##</sup>	---		\	\	Comply	
28	Silvery metal wire (connected w/ No.25)	Cd	BL	\	\	\	Comply	Jan 05, 2009
		Pb	BL		\	\	Comply	
		Hg	BL		\	\	Comply	
		Cr <sup>6+</sup>	BL		\	\	Comply	
		PBBs	---		\	\	\	
		PBDEs <sup>##</sup>	---		\	\	\	

This document is issued by the Company under its General Conditions of Service printed overleaf or available on request and accessible at [http://www.sgs.com/terms\\_and\\_conditions.htm](http://www.sgs.com/terms_and_conditions.htm). Attention is drawn to the limitation of liability, indemnification and jurisdiction issues defined therein. Any holder of this document is advised that information contained herein reflects the Company's findings at the time of its intervention only and within the limits of Client's instructions, if any. The Company's sole responsibility is to its Client and this document does not generate parties to a transaction from exercising all their rights and obligations under the transaction documents. Any unauthorized alteration, forgery or falsification of the content or appearance of this document is unlawful and offenders may be prosecuted to the fullest extent of the law. Unless otherwise stated, the results shown in this test report refer only to the sample(s) tested. This document cannot be reproduced except in full, without prior approval of the Company.



Part No.	Part Name	Restricted Substances	Results of EDXRF <sup>(1)</sup>	No. of Related Test Report	Results in Related Test Report(mg/kg)	Result of Wet Chemical Testing <sup>(2)</sup> (mg/kg)	Conclusion on RoHS	Sample Submitted / Resubmitted Date
29	Red plastic w/ black printing (wire insulation) (on No.28)	Cd	BL	\	\	\	Comply	Jan 05, 2009
		Pb	BL		\	\	Comply	
		Hg	BL		\	\	Comply	
		Cr <sup>6+</sup>	BL		\	\	Comply	
		PBBs	BL		\	\	Comply	
		PBDEs <sup>###</sup>			\	\	Comply	
30	Black plastic w/ white printing (wire insulation) (on No.28)	Cd	BL	\	\	\	Comply	Jan 05, 2009
		Pb	BL		\	\	Comply	
		Hg	BL		\	\	Comply	
		Cr <sup>6+</sup>	BL		\	\	Comply	
		PBBs	BL		\	\	Comply	
		PBDEs <sup>###</sup>			\	\	Comply	
31	Dk-grey core (magnet) (in No.20)	Cd	BL	\	\	\	Comply	Jan 05, 2009
		Pb	BL		\	\	Comply	
		Hg	BL		\	\	Comply	
		Cr <sup>6+</sup>	BL		\	\	Comply	
		PBBs	BL		\	\	Comply	
		PBDEs <sup>###</sup>			\	\	Comply	
32	Silvery metal (silicon steel sheet) (on No.26)	Cd	BL	\	\	\	Comply	Jan 05, 2009
		Pb	BL		\	\	Comply	
		Hg	BL		\	\	Comply	
		Cr <sup>6+</sup>	IN		\	Negative	Comply	
		PBBs	---		\	\	\	
		PBDEs <sup>###</sup>			\	\	\	
33	White plastic (on No.26)	Cd	BL	\	\	\	Comply	Jan 05, 2009
		Pb	BL		\	\	Comply	
		Hg	BL		\	\	Comply	
		Cr <sup>6+</sup>	BL		\	\	Comply	
		PBBs	BL		\	\	Comply	
		PBDEs <sup>###</sup>			\	\	Comply	
34	Copper-colored metal wire w/ transparent surface (on No.33)	Cd	BL	\	\	\	Comply	Jan 05, 2009
		Pb	BL		\	\	Comply	
		Hg	BL		\	\	Comply	
		Cr <sup>6+</sup>	BL		\	\	Comply	
		PBBs	BL		\	\	Comply	
		PBDEs <sup>###</sup>			\	\	Comply	
35	Black plastic tube (on No.26)	Cd	BL	\	\	\	Comply	Jan 05, 2009
		Pb	BL		\	\	Comply	
		Hg	BL		\	\	Comply	
		Cr <sup>6+</sup>	BL		\	\	Comply	
		PBBs	BL		\	\	Comply	
		PBDEs <sup>###</sup>			\	\	Comply	

This document is issued by the Company under its General Conditions of Service printed overleaf or available on request and accessible at [http://www.sgs.com/terms\\_and\\_conditions.htm](http://www.sgs.com/terms_and_conditions.htm). Attention is drawn to the limitation of liability, indemnification and jurisdiction issues defined therein. Any holder of this document is advised that information contained herein reflects the Company's findings at the time of its intervention only and within the limits of Client's instructions, if any. The Company's sole responsibility is to its Client and this document does not generate parties to a transaction from exercising all their rights and obligations under the transaction documents. Any unauthorized alteration, forgery or falsification of the content or appearance of this document is unlawful and offenders may be prosecuted to the fullest extent of the law. Unless otherwise stated, the results shown in this test report refer only to the sample(s) tested. This document cannot be reproduced except in full, without prior approval of the Company.





Verification Report

No.: GZ0901000579/CHEM

Date: FEB 09, 2009

Page 7 of 34

Part No.	Part Name	Restricted Substances	Results of EDXRF <sup>(1)</sup>	No. of Related Test Report	Results in Related Test Report(mg/kg)	Result of Wet Chemical Testing <sup>(2)</sup> (mg/kg)	Conclusion on RoHS	Sample Submitted / Resubmitted Date
36	Brassy metal ring (on No.26)	Cd	BL	\	\	\	Comply	Jan 05, 2009
		Pb	BL		\	\	Comply	
		Hg	BL		\	\	Comply	
		Cr <sup>6+</sup>	BL		\	\	Comply	
		PBBs	---		\	\	\	
		PBDEs <sup>###</sup>	---		\	\	\	
37-C	Black plastic part (on No.26)	Cd	BL	\	\	\	Comply	Jan 05, 2009/ Jan 19, 2009
		Pb	BL		\	\	Comply	
		Hg	BL		\	\	Comply	
		Cr <sup>6+</sup>	BL		\	\	Comply	
		PBBs	BL		\	\	Comply	
		PBDEs <sup>###</sup>	---		\	\	Comply	
38-C	Dk-grey material ring w/ silvery surface (on No.37)	Cd	BL	\	\	\	Comply	Jan 05, 2009/ Jan 19, 2009/ Feb 05, 2009
		Pb	BL		\	\	Comply	
		Hg	BL		\	\	Comply	
		Cr <sup>6+</sup>	BL		\	\	Comply	
		PBBs	BL		\	\	Comply	
		PBDEs <sup>###</sup>	---		\	\	Comply	
39	Silvery metal (solder on No.38)	Cd	BL	\	\	\	Comply	Jan 05, 2009
		Pb	BL		\	\	Comply	
		Hg	BL		\	\	Comply	
		Cr <sup>6+</sup>	BL		\	\	Comply	
		PBBs	---		\	\	\	
		PBDEs <sup>###</sup>	---		\	\	\	
40	Silvery / copper-colored metal sheet (on No.37)	Cd	BL	\	\	\	Comply	Jan 05, 2009
		Pb	BL		\	\	Comply	
		Hg	BL		\	\	Comply	
		Cr <sup>6+</sup>	BL		\	\	Comply	
		PBBs	---		\	\	\	
		PBDEs <sup>###</sup>	---		\	\	\	
41	Red paper ring (on No.40)	Cd	BL	\	\	\	Comply	Jan 05, 2009
		Pb	BL		\	\	Comply	
		Hg	BL		\	\	Comply	
		Cr <sup>6+</sup>	BL		\	\	Comply	
		PBBs	BL		\	\	Comply	
		PBDEs <sup>###</sup>	---		\	\	Comply	
42	White plastic ring (on No.26)	Cd	BL	\	\	\	Comply	Jan 05, 2009
		Pb	BL		\	\	Comply	
		Hg	BL		\	\	Comply	
		Cr <sup>6+</sup>	BL		\	\	Comply	
		PBBs	BL		\	\	Comply	
		PBDEs <sup>###</sup>	---		\	\	Comply	

This document is issued by the Company under its General Conditions of Service printed overleaf or available on request and accessible at [http://www.sgs.com/terms\\_and\\_conditions.htm](http://www.sgs.com/terms_and_conditions.htm). Attention is drawn to the limitation of liability, indemnification and jurisdiction issues defined therein. Any holder of this document is advised that information contained hereon reflects the Company's findings at the time of its intervention only and within the limits of Client's instructions, if any. The Company's sole responsibility is to its Client and this document does not generate parties to a transaction from exercising all their rights and obligations under the transaction documents. Any unauthorized alteration, forgery or falsification of the content or appearance of this document is unlawful and offenders may be prosecuted to the fullest extent of the law. Unless otherwise stated, the results shown in this test report refer only to the sample(s) tested. This document cannot be reproduced except in full, without prior approval of the Company.



130 Kazhu Road, Siontech Park, Guangzhou Economic & Technology Development District, Guangzhou, China 510663 | (86-20) 82155555 | (86-20) 82075125 | www.cn.sgs.com  
 中国·广州·经济技术开发区科学城科珠路198号 邮编: 510663 | (86-20) 82155555 | (86-20) 82075125 | e: sgs.china@sgs.com

Member of the SGS Group (SGS SA)

Part No.	Part Name	Restricted Substances	Results of EDXRF <sup>(1)</sup>	No. of Related Test Report	Results in Related Test Report(mg/kg)	Result of Wet Chemical Testing <sup>(2)</sup> (mg/kg)	Conclusion on RoHS	Sample Submitted / Resubmitted Date
43	Beige plastic (connected w/ No.20)	Cd	BL	\	\	\	Comply	Jan 05, 2009
		Pb	BL		\	\	Comply	
		Hg	BL		\	\	Comply	
		Cr <sup>6+</sup>	BL		\	\	Comply	
		PBBs	BL		\	\	Comply	
		PBDEs <sup>###</sup>			\	\	Comply	
44	Silvery metal screw (in No.43)	Cd	BL	\	\	\	Comply	Jan 05, 2009
		Pb	BL		\	\	Comply	
		Hg	BL		\	\	Comply	
		Cr <sup>6+</sup>	IN		\	Negative	Comply	
		PBBs	---		\	\	\	
		PBDEs <sup>###</sup>			\	\	\	
45	White plastic (gear) (in No.43)	Cd	BL	\	\	\	Comply	Jan 05, 2009
		Pb	BL		\	\	Comply	
		Hg	BL		\	\	Comply	
		Cr <sup>6+</sup>	BL		\	\	Comply	
		PBBs	BL		\	\	Comply	
		PBDEs <sup>###</sup>			\	\	Comply	
46	Silvery metal (battery sheet) (in No.4)	Cd	BL	\	\	\	Comply	Jan 05, 2009
		Pb	BL		\	\	Comply	
		Hg	BL		\	\	Comply	
		Cr <sup>6+</sup>	BL		\	\	Comply	
		PBBs	---		\	\	\	
		PBDEs <sup>###</sup>			\	\	\	
47	Silvery metal spring (connected w/ No.46)	Cd	BL	\	\	\	Comply	Jan 05, 2009
		Pb	BL		\	\	Comply	
		Hg	BL		\	\	Comply	
		Cr <sup>6+</sup>	BL		\	\	Comply	
		PBBs	---		\	\	\	
		PBDEs <sup>###</sup>			\	\	\	
48	White plastic (knob) (connected w/ No.4)	Cd	BL	\	\	\	Comply	Jan 05, 2009
		Pb	BL		\	\	Comply	
		Hg	BL		\	\	Comply	
		Cr <sup>6+</sup>	BL		\	\	Comply	
		PBBs	BL		\	\	Comply	
		PBDEs <sup>###</sup>			\	\	Comply	
49	Silvery metal screw (connected w/ No.48)	Cd	BL	\	\	\	Comply	Jan 05, 2009
		Pb	BL		\	\	Comply	
		Hg	BL		\	\	Comply	
		Cr <sup>6+</sup>	IN		\	Negative	Comply	
		PBBs	---		\	\	\	
		PBDEs <sup>###</sup>			\	\	\	

This document is issued by the Company under its General Conditions of Service printed overleaf or available on request and accessible at [http://www.sgs.com/terms\\_and\\_conditions.htm](http://www.sgs.com/terms_and_conditions.htm). Attention is drawn to the limitation of liability, indemnification and jurisdiction issues defined therein. Any holder of this document is advised that information contained herein reflects the Company's findings at the time of its intervention only and within the limits of Client's instructions, if any. The Company's sole responsibility is to its Client and this document does not generate parties to a transaction from exercising all their rights and obligations under the transaction documents. Any unauthorized alteration, forgery or falsification of the content or appearance of this document is unlawful and offenders may be prosecuted to the fullest extent of the law. Unless otherwise stated, the results shown in this test report refer only to the sample(s) tested. This document cannot be reproduced except in full, without prior approval of the Company.





Part No.	Part Name	Restricted Substances	Results of EDXRF <sup>(1)</sup>	No. of Related Test Report	Results in Related Test Report(mg/kg)	Result of Wet Chemical Testing <sup>(2)</sup> (mg/kg)	Conclusion on RoHS	Sample Submitted / Resubmitted Date
50	Transparent glue (in No.4)	Cd	BL	\	\	\	Comply	Jan 05, 2009
		Pb	BL		\	\	Comply	
		Hg	BL		\	\	Comply	
		Cr <sup>6+</sup>	BL		\	\	Comply	
		PBBs	BL		\	\	Comply	
		PBDEs <sup>###</sup>			\	\	Comply	
51	Green "PCB" (in No.4)	Cd	BL	\	\	\	Comply	Jan 05, 2009
		Pb	BL		\	\	Comply	
		Hg	BL		\	\	Comply	
		Cr <sup>6+</sup>	BL		\	\	Comply	
		PBBs	BL		\	\	Comply	
		PBDEs <sup>###</sup>			\	\	Comply	
52-C	Black body w/ brown printing (Q7 on No.51)	Cd	BL	\	\	\	Comply	Jan 05, 2009/ Jan 19, 2009
		Pb	BL		\	\	Comply	
		Hg	BL		\	\	Comply	
		Cr <sup>6+</sup>	BL		\	\	Comply	
		PBBs	IN		\	N.D.	Comply	
		PBDEs <sup>###</sup>			\	N.D.	Comply	
53-C	Black body w/ silvery printing (D1 on No.51)	Cd	BL	\	\	\	Comply	Jan 05, 2009/ Jan 19, 2009
		Pb	BL		\	\	Comply	
		Hg	BL		\	\	Comply	
		Cr <sup>6+</sup>	BL		\	\	Comply	
		PBBs	IN		\	N.D.	Comply	
		PBDEs <sup>###</sup>			\	N.D.	Comply	
54	Black plastic w/ white printing (outer shell) (C1 on No.51)	Cd	BL	\	\	\	Comply	Jan 05, 2009
		Pb	BL		\	\	Comply	
		Hg	BL		\	\	Comply	
		Cr <sup>6+</sup>	BL		\	\	Comply	
		PBBs	BL		\	\	Comply	
		PBDEs <sup>###</sup>			\	\	Comply	
55	Black plastic w/ white printing (outer sheet) (C2 on No.51)	Cd	BL	\	\	\	Comply	Jan 05, 2009
		Pb	BL		\	\	Comply	
		Hg	BL		\	\	Comply	
		Cr <sup>6+</sup>	BL		\	\	Comply	
		PBBs	BL		\	\	Comply	
		PBDEs <sup>###</sup>			\	\	Comply	
56	Silvery metal shell (in No.54)	Cd	BL	\	\	\	Comply	Jan 05, 2009
		Pb	BL		\	\	Comply	
		Hg	BL		\	\	Comply	
		Cr <sup>6+</sup>	BL		\	\	Comply	
		PBBs	---		\	\	\	
		PBDEs <sup>###</sup>			\	\	\	

This document is issued by the Company under its General Conditions of Service printed overleaf or available on request and accessible at [http://www.sgs.com/terms\\_and\\_conditions.htm](http://www.sgs.com/terms_and_conditions.htm). Attention is drawn to the limitation of liability, indemnification and jurisdiction issues defined therein. Any holder of this document is advised that information contained hereon reflects the Company's findings at the time of its intervention only and within the limits of Client's instructions, if any. The Company's sole responsibility is to its Client and this document does not generate parties to a transaction from exercising all their rights and obligations under the transaction documents. Any unauthorized alteration, forgery or falsification of the content or appearance of this document is unlawful and offenders may be prosecuted to the fullest extent of the law.

Unless otherwise stated the results shown in this test report refer only to the sample(s) tested. This document cannot be reproduced except in full, without prior approval of the Company.





Verification Report

No.: GZ0901000579/CHEM

Date: FEB 09, 2009

Page 10 of 34

Part No.	Part Name	Restricted Substances	Results of EDXRF <sup>(1)</sup>	No. of Related Test Report	Results in Related Test Report(mg/kg)	Result of Wet Chemical Testing <sup>(2)</sup> (mg/kg)	Conclusion on RoHS	Sample Submitted / Resubmitted Date
57	Black rubber (cover) (in No.56)	Cd	BL	\	\	\	Comply	Jan 05, 2009
		Pb	BL		\	\	Comply	
		Hg	BL		\	\	Comply	
		Cr <sup>6+</sup>	BL		\	\	Comply	
		PBBs	BL		\	\	Comply	
		PBDEs <sup>###</sup>			\	\	Comply	
58	Brown paper w/ liquid (in No.56)	Cd	BL	\	\	\	Comply	Jan 05, 2009
		Pb	BL		\	\	Comply	
		Hg	BL		\	\	Comply	
		Cr <sup>6+</sup>	BL		\	\	Comply	
		PBBs	BL		\	\	Comply	
		PBDEs <sup>###</sup>			\	\	Comply	
59	Grey metal foil (in No.56)	Cd	BL	\	\	\	Comply	Jan 05, 2009
		Pb	BL		\	\	Comply	
		Hg	BL		\	\	Comply	
		Cr <sup>6+</sup>	BL		\	\	Comply	
		PBBs	---		\	\	\	
		PBDEs <sup>###</sup>			\	\	\	
60	Silvery metal pin (in No.56)	Cd	BL	\	\	\	Comply	Jan 05, 2009
		Pb	BL		\	\	Comply	
		Hg	BL		\	\	Comply	
		Cr <sup>6+</sup>	BL		\	\	Comply	
		PBBs	---		\	\	\	
		PBDEs <sup>###</sup>			\	\	\	
61	Silvery metal shell (in No.55)	Cd	BL	\	\	\	Comply	Jan 05, 2009
		Pb	BL		\	\	Comply	
		Hg	BL		\	\	Comply	
		Cr <sup>6+</sup>	BL		\	\	Comply	
		PBBs	---		\	\	\	
		PBDEs <sup>###</sup>			\	\	\	
62	Black rubber (cover) (in No.61)	Cd	BL	\	\	\	Comply	Jan 05, 2009
		Pb	BL		\	\	Comply	
		Hg	BL		\	\	Comply	
		Cr <sup>6+</sup>	BL		\	\	Comply	
		PBBs	BL		\	\	Comply	
		PBDEs <sup>###</sup>			\	\	Comply	
63	Brown paper w/ liquid (in No.61)	Cd	BL	\	\	\	Comply	Jan 05, 2009
		Pb	BL		\	\	Comply	
		Hg	BL		\	\	Comply	
		Cr <sup>6+</sup>	BL		\	\	Comply	
		PBBs	BL		\	\	Comply	
		PBDEs <sup>###</sup>			\	\	Comply	

This document is issued by the Company under its General Conditions of Service printed overleaf or available on request and accessible at [http://www.sgs.com/terms\\_and\\_conditions.htm](http://www.sgs.com/terms_and_conditions.htm). Attention is drawn to the limitation of liability, indemnification and jurisdiction issues defined therein. Any holder of this document is advised that information contained herein reflects the Company's findings at the time of its intervention only and within the limits of Client's instructions, if any. The Company's sole responsibility is to its Client and this document does not generate parties to a transaction from exercising all their rights and obligations under the transaction documents. Any unauthorized alteration, forgery or falsification of the content or appearance of this document is unlawful and offenders may be prosecuted to the fullest extent of the law. Unless otherwise stated, the results shown in this test report refer only to the sample(s) tested. This document cannot be reproduced except in full, without prior approval of the Company.



130 Kazhu Road, Siontech Park, Guangzhou Economic & Technology Development District, Guangzhou, China 510663 | (86-20) 82155555 | (86-20) 82075125 | www.cn.sgs.com  
 中国·广州·经济技术开发区科学城科珠路198号 邮编: 510663 | (86-20) 82155555 | (86-20) 82075125 | e: sgs.china@sgs.com

Member of the SGS Group (SGS SA)

Part No.	Part Name	Restricted Substances	Results of EDXRF <sup>(1)</sup>	No. of Related Test Report	Results in Related Test Report(mg/kg)	Result of Wet Chemical Testing <sup>(2)</sup> (mg/kg)	Conclusion on RoHS	Sample Submitted / Resubmitted Date
64	Grey metal foil (in No.61)	Cd	BL	\	\	\	Comply	Jan 05, 2009
		Pb	BL		\	\	Comply	
		Hg	BL		\	\	Comply	
		Cr <sup>6+</sup>	BL		\	\	Comply	
		PBBs	---		\	\	\	
		PBDEs <sup>##</sup>	---		\	\	\	
65	Silvery metal pin (in No.61)	Cd	BL	\	\	\	Comply	Jan 05, 2009
		Pb	BL		\	\	Comply	
		Hg	BL		\	\	Comply	
		Cr <sup>6+</sup>	BL		\	\	Comply	
		PBBs	---		\	\	\	
		PBDEs <sup>##</sup>	---		\	\	\	
66	Black plastic shell (VR1 on No.51)	Cd	BL	\	\	\	Comply	Jan 05, 2009
		Pb	BL		\	\	Comply	
		Hg	BL		\	\	Comply	
		Cr <sup>6+</sup>	BL		\	\	Comply	
		PBBs	BL		\	\	Comply	
		PBDEs <sup>##</sup>	BL		\	\	Comply	
67	White plastic cover (on No.66)	Cd	BL	\	\	\	Comply	Jan 05, 2009
		Pb	BL		\	\	Comply	
		Hg	BL		\	\	Comply	
		Cr <sup>6+</sup>	BL		\	\	Comply	
		PBBs	BL		\	\	Comply	
		PBDEs <sup>##</sup>	BL		\	\	Comply	
68	Brown / black material ring (in No.66)	Cd	BL	\	\	\	Comply	Jan 05, 2009
		Pb	BL		\	\	Comply	
		Hg	BL		\	\	Comply	
		Cr <sup>6+</sup>	BL		\	\	Comply	
		PBBs	BL		\	\	Comply	
		PBDEs <sup>##</sup>	BL		\	\	Comply	
69	Golden metal (axis) (in No.66)	Cd	BL	\	\	\	Comply	Jan 05, 2009
		Pb	IN		\	29470 (See remark <sup>(1)</sup> )	Comply	
		Hg	BL		\	\	Comply	
		Cr <sup>6+</sup>	BL		\	\	Comply	
		PBBs	---		\	\	\	
		PBDEs <sup>##</sup>	---		\	\	\	
70	Copper-colored metal part (on No.69)	Cd	BL	\	\	\	Comply	Jan 05, 2009
		Pb	BL		\	\	Comply	
		Hg	BL		\	\	Comply	
		Cr <sup>6+</sup>	BL		\	\	Comply	
		PBBs	---		\	\	\	
		PBDEs <sup>##</sup>	---		\	\	\	

This document is issued by the Company under its General Conditions of Service printed overleaf or available on request and accessible at [http://www.sgs.com/terms\\_and\\_conditions.htm](http://www.sgs.com/terms_and_conditions.htm). Attention is drawn to the limitation of liability, indemnification and jurisdiction issues defined therein. Any holder of this document is advised that information contained hereon reflects the Company's findings at the time of its intervention only and within the limits of Client's instructions, if any. The Company's sole responsibility is to its Client and this document does not generate parties to a transaction from exercising all their rights and obligations under the transaction documents. Any unauthorized alteration, forgery or falsification of the content or appearance of this document is unlawful and offenders may be prosecuted to the fullest extent of the law. Unless otherwise stated, the results shown in this test report refer only to the sample(s) tested. This document cannot be reproduced except in full, without prior approval of the Company.



Part No.	Part Name	Restricted Substances	Results of EDXRF <sup>(1)</sup>	No. of Related Test Report	Results in Related Test Report(mg/kg)	Result of Wet Chemical Testing <sup>(2)</sup> (mg/kg)	Conclusion on RoHS	Sample Submitted / Resubmitted Date
71	Silvery metal part (on No.69)	Cd	BL	\	\	\	Comply	Jan 05, 2009
		Pb	BL		\	\	Comply	
		Hg	BL		\	\	Comply	
		Cr <sup>6+</sup>	BL		\	\	Comply	
		PBBs	---		\	\	\	
		PBDEs <sup>##</sup>	---		\	\	\	
72	Golden metal (clip) (on No.69)	Cd	BL	\	\	\	Comply	Jan 05, 2009
		Pb	BL		\	\	Comply	
		Hg	BL		\	\	Comply	
		Cr <sup>6+</sup>	BL		\	\	Comply	
		PBBs	---		\	\	\	
		PBDEs <sup>##</sup>	---		\	\	\	
73	Beige plastic (on No.69)	Cd	BL	\	\	\	Comply	Jan 05, 2009
		Pb	BL		\	\	Comply	
		Hg	BL		\	\	Comply	
		Cr <sup>6+</sup>	BL		\	\	Comply	
		PBBs	---		\	\	Comply	
		PBDEs <sup>##</sup>	---		\	\	Comply	
74	Silvery metal pin (small) (connected w/ No.66)	Cd	BL	\	\	\	Comply	Jan 05, 2009
		Pb	BL		\	\	Comply	
		Hg	BL		\	\	Comply	
		Cr <sup>6+</sup>	BL		\	\	Comply	
		PBBs	---		\	\	\	
		PBDEs <sup>##</sup>	---		\	\	\	
75	Silvery metal pin (big) (connected w/ No.66)	Cd	BL	\	\	\	Comply	Jan 05, 2009
		Pb	BL		\	\	Comply	
		Hg	BL		\	\	Comply	
		Cr <sup>6+</sup>	BL		\	\	Comply	
		PBBs	---		\	\	\	
		PBDEs <sup>##</sup>	---		\	\	\	
76	Silvery-grey metal spring (connected w/ No.66)	Cd	BL	\	\	\	Comply	Jan 05, 2009
		Pb	BL		\	\	Comply	
		Hg	BL		\	\	Comply	
		Cr <sup>6+</sup>	BL		\	\	Comply	
		PBBs	---		\	\	\	
		PBDEs <sup>##</sup>	---		\	\	\	
77	Copper-colored metal rivet (connected w/ No.74)	Cd	BL	\	\	\	Comply	Jan 05, 2009
		Pb	BL		\	\	Comply	
		Hg	BL		\	\	Comply	
		Cr <sup>6+</sup>	BL		\	\	Comply	
		PBBs	---		\	\	\	
		PBDEs <sup>##</sup>	---		\	\	\	

This document is issued by the Company under its General Conditions of Service printed overleaf or available on request and accessible at [http://www.sgs.com/terms\\_and\\_conditions.htm](http://www.sgs.com/terms_and_conditions.htm). Attention is drawn to the limitation of liability, indemnification and jurisdiction issues defined therein. Any holder of this document is advised that information contained herein reflects the Company's findings at the time of its intervention only and within the limits of Client's instructions, if any. The Company's sole responsibility is to its Client and this document does not generate parties to a transaction from exercising all their rights and obligations under the transaction documents. Any unauthorized alteration, forgery or falsification of the content or appearance of this document is unlawful and offenders may be prosecuted to the fullest extent of the law.

Unless otherwise stated, the results shown in this test report refer only to the sample(s) tested. This document cannot be reproduced except in full, without prior approval of the Company.





Verification Report

No.: GZ0901000579/CHEM

Date: FEB 09, 2009

Page 13 of 34

Part No.	Part Name	Restricted Substances	Results of EDXRF <sup>(1)</sup>	No. of Related Test Report	Results in Related Test Report(mg/kg)	Result of Wet Chemical Testing <sup>(2)</sup> (mg/kg)	Conclusion on RoHS	Sample Submitted / Resubmitted Date
78	Silvery metal rivet (connected w/ No.75)	Cd	BL	\	\	\	Comply	Jan 05, 2009
		Pb	BL		\	\	Comply	
		Hg	BL		\	\	Comply	
		Cr <sup>6+</sup>	BL		\	\	Comply	
		PBBs	---		\	\	\	
		PBDEs <sup>###</sup>	---		\	\	\	
79-C	Transparent body (LED) (connected w/ No.51)	Cd	BL	\	\	\	Comply	Jan 05, 2009/ Jan 19, 2009
		Pb	BL		\	\	Comply	
		Hg	BL		\	\	Comply	
		Cr <sup>6+</sup>	BL		\	\	Comply	
		PBBs	IN		\	N.D.	Comply	
		PBDEs <sup>###</sup>	IN		\	N.D.	Comply	
80	Silvery metal pin (connected w/ No.79)	Cd	BL	\	\	\	Comply	Jan 05, 2009
		Pb	BL		\	\	Comply	
		Hg	BL		\	\	Comply	
		Cr <sup>6+</sup>	BL		\	\	Comply	
		PBBs	---		\	\	\	
		PBDEs <sup>###</sup>	---		\	\	\	
81	Black plastic w/ white printing (heat shrinkable tube) (on No.80)	Cd	BL	\	\	\	Comply	Jan 05, 2009
		Pb	BL		\	\	Comply	
		Hg	BL		\	\	Comply	
		Cr <sup>6+</sup>	BL		\	\	Comply	
		PBBs	BL		\	\	Comply	
		PBDEs <sup>###</sup>	BL		\	\	Comply	
82	White plastic (on No.79)	Cd	BL	\	\	\	Comply	Jan 05, 2009
		Pb	BL		\	\	Comply	
		Hg	BL		\	\	Comply	
		Cr <sup>6+</sup>	BL		\	\	Comply	
		PBBs	BL		\	\	Comply	
		PBDEs <sup>###</sup>	BL		\	\	Comply	
83-C	Black body (LED) (connected w/ No.51)	Cd	BL	\	\	\	Comply	Jan 05, 2009/ Jan 19, 2009
		Pb	BL		\	\	Comply	
		Hg	BL		\	\	Comply	
		Cr <sup>6+</sup>	BL		\	\	Comply	
		PBBs	IN		\	N.D.	Comply	
		PBDEs <sup>###</sup>	IN		\	N.D.	Comply	
84-C	Blue transparent body (LED) (connected w/ No.51)	Cd	BL	\	\	\	Comply	Jan 05, 2009/ Jan 19, 2009
		Pb	BL		\	\	Comply	
		Hg	BL		\	\	Comply	
		Cr <sup>6+</sup>	BL		\	\	Comply	
		PBBs	IN		\	N.D.	Comply	
		PBDEs <sup>###</sup>	IN		\	N.D.	Comply	

This document is issued by the Company under its General Conditions of Service printed overleaf or available on request and accessible at [http://www.sgs.com/terms\\_and\\_conditions.htm](http://www.sgs.com/terms_and_conditions.htm). Attention is drawn to the limitation of liability, indemnification and jurisdiction issues defined therein. Any holder of this document is advised that information contained herein reflects the Company's findings at the time of its intervention only and within the limits of Client's instructions, if any. The Company's sole responsibility is to its Client and this document does not generate parties to a transaction from exercising all their rights and obligations under the transaction documents. Any unauthorized alteration, forgery or falsification of the content or appearance of this document is unlawful and offenders may be prosecuted to the fullest extent of the law. Unless otherwise stated, the results shown in this test report refer only to the sample(s) tested. This document cannot be reproduced except in full, without prior approval of the Company.



130 Kazhu Road, Saitech Park, Guangzhou Economic & Technology Development District, Guangzhou, China 510663 | (86-20) 82155555 | (86-20) 82075125 | www.cn.sgs.com  
 中国·广州·经济技术开发区科学城科珠路198号 邮编: 510663 | (86-20) 82155555 | (86-20) 82075125 | e: sgs.china@sgs.com

Member of the SGS Group (SGS SA)

Part No.	Part Name	Restricted Substances	Results of EDXRF <sup>(1)</sup>	No. of Related Test Report	Results in Related Test Report(mg/kg)	Result of Wet Chemical Testing <sup>(2)</sup> (mg/kg)	Conclusion on RoHS	Sample Submitted / Resubmitted Date
85-C	Black body w/ brown printing (U on No.51)	Cd	BL	\	\	\	Comply	Jan 05, 2009/ Jan 19, 2009
		Pb	BL		\	\	Comply	
		Hg	BL		\	\	Comply	
		Cr <sup>6+</sup>	BL		\	\	Comply	
		PBBs	IN		\	N.D.	Comply	
		PBDEs <sup>##</sup>			\	N.D.	Comply	
86	Brown "chip capacitor" (C4 on No.51)	Cd	BL	\	\	\	Comply	Jan 05, 2009
		Pb	BL		\	\	Comply	
		Hg	BL		\	\	Comply	
		Cr <sup>6+</sup>	BL		\	\	Comply	
		PBBs	BL		\	\	Comply	
		PBDEs <sup>##</sup>			\	\	Comply	
87-C	Black body w/ brown printing (Q1 on No.51)	Cd	BL	\	\	\	Comply	Jan 05, 2009/ Jan 19, 2009
		Pb	BL		\	\	Comply	
		Hg	BL		\	\	Comply	
		Cr <sup>6+</sup>	BL		\	\	Comply	
		PBBs	IN		\	N.D.	Comply	
		PBDEs <sup>##</sup>			\	N.D.	Comply	
88-C	Black body w/ brown printing (Q3 on No.51)	Cd	BL	\	\	\	Comply	Jan 05, 2009/ Jan 19, 2009
		Pb	BL		\	\	Comply	
		Hg	BL		\	\	Comply	
		Cr <sup>6+</sup>	BL		\	\	Comply	
		PBBs	IN		\	N.D.	Comply	
		PBDEs <sup>##</sup>			\	N.D.	Comply	
89	Silvery metal (solder on No.51)	Cd	BL	\	\	\	Comply	Jan 05, 2009
		Pb	BL		\	\	Comply	
		Hg	BL		\	\	Comply	
		Cr <sup>6+</sup>	BL		\	\	Comply	
		PBBs	---		\	\	\	
		PBDEs <sup>##</sup>			\	\	\	

This document is issued by the Company under its General Conditions of Service printed overleaf or available on request and accessible at [http://www.sgs.com/terms\\_and\\_conditions.htm](http://www.sgs.com/terms_and_conditions.htm). Attention is drawn to the limitation of liability, indemnification and jurisdiction issues defined therein. Any holder of this document is advised that information contained hereon reflects the Company's findings at the time of its intervention only and within the limits of Client's instructions, if any. The Company's sole responsibility is to its Client and this document does not generate parties to a transaction from exercising all their rights and obligations under the transaction documents. Any unauthorized alteration, forgery or falsification of the content or appearance of this document is unlawful and offenders may be prosecuted to the fullest extent of the law. Unless otherwise stated, the results shown in this test report refer only to the sample(s) tested. This document cannot be reproduced except in full, without prior approval of the Company.



**Remark**

- (1) (a) It is the result on total Br while test item on restricted substances is PBBs/PBDEs. It is the result on total Cr while test item on restricted substances is Cr<sup>6+</sup>.
- (b) Results are obtained by EDXRF for primary screening, and further chemical testing by ICP (for Cd, Pb, Hg), UV-VIS (for CrVI) and GCMSD (for PBBs, PBDEs) is recommended to be performed, if the concentration exceeds the below warning value according to IEC 62321:2008 (unit: mg/kg)

Element	Polymer	Metal	Composite Materials
Cd	$BL \leq (70-3\sigma) < X < (130+3\sigma) \leq OL$	$BL \leq (70-3\sigma) < X < (130+3\sigma) \leq OL$	$LOD < X < (150+3\sigma) \leq OL$
Pb	$BL \leq (700-3\sigma) < X < (1300+3\sigma) \leq OL$	$BL \leq (700-3\sigma) < X < (1300+3\sigma) \leq OL$	$BL \leq (500-3\sigma) < X < (1500+3\sigma) \leq OL$
Hg	$BL \leq (700-3\sigma) < X < (1300+3\sigma) \leq OL$	$BL \leq (700-3\sigma) < X < (1300+3\sigma) \leq OL$	$BL \leq (500-3\sigma) < X < (1500+3\sigma) \leq OL$
Br	$BL \leq (300-3\sigma) < X$	---	$BL \leq (250-3\sigma) < X$
Cr	$BL \leq (700-3\sigma) < X$	$BL \leq (700-3\sigma) < X$	$BL \leq (500-3\sigma) < X$

(c) OL = Over Limit, BL = Below Limit, IN = Inconclusive, LOD = Limit of Detection

(d) The XRF screening test for RoHS elements – The reading may be different to the actual content in the sample be of non-uniformity composition

- (2) (a) mg/kg = ppm=0.0001%, N.D. = not detected (<MDL), --- = not conducted, \ = not available.
- (b) Unit and Method Detection Limit (MDL) in wet chemical test

Test Items	Pb	Cd	Hg
Units	mg/kg	mg/kg	mg/kg
MDL	2	2	2

The MDL for single compound of PBBs & PBDEs is 5 mg/kg and MDL of Cr<sup>6+</sup> for polymer & composite sample is 2 mg/kg.

- (c) According to IEC 62321:2008, result on Cr<sup>6+</sup> for metal sample is shown as Positive/Negative. Negative = Absence of Cr<sup>6+</sup> coating, Positive = Presence of Cr<sup>6+</sup> coating.  
Storage conditions and production date of the tested sample are unavailable and thus results of Cr(VI) represent status of the sample at the time of testing.
- (d) ## = The exemption of DecaBDE in polymeric application according 2005/717/EC was overruled by the European Court of Justice by its decision of 01.04.2008. Subsequently DecaBDE is included in the sum of PBDE after 01.07.2008

Remark[1]: According to the specification from client, No.69 is copper alloy, while Lead as an alloying element in copper alloy containing up to 4% Lead by weight is exempted by RoHS regulatory (Directive 2002/95/EC of the European Parliament and of the council of 27 January 2003).

This document is issued by the Company under its General Conditions of Service printed overleaf or available on request and accessible at [http://www.sgs.com/terms\\_and\\_conditions.htm](http://www.sgs.com/terms_and_conditions.htm). Attention is drawn to the limitation of liability, indemnification and jurisdiction issues defined therein. Any holder of this document is advised that information contained hereon reflects the Company's findings at the time of its intervention only and within the limits of Client's instructions, if any. The Company's sole responsibility is to its Client and this document does not constitute parties to a transaction from exercising all their rights and obligations under the transaction documents. Any unauthorized alteration, forgery or falsification of the content or appearance of this document is unlawful and offenders may be prosecuted to the fullest extent of the law.  
Unless otherwise stated the results shown in this test report refer only to the sample(s) tested. This document cannot be reproduced except in full, without prior approval of the Company.



## Photo Index

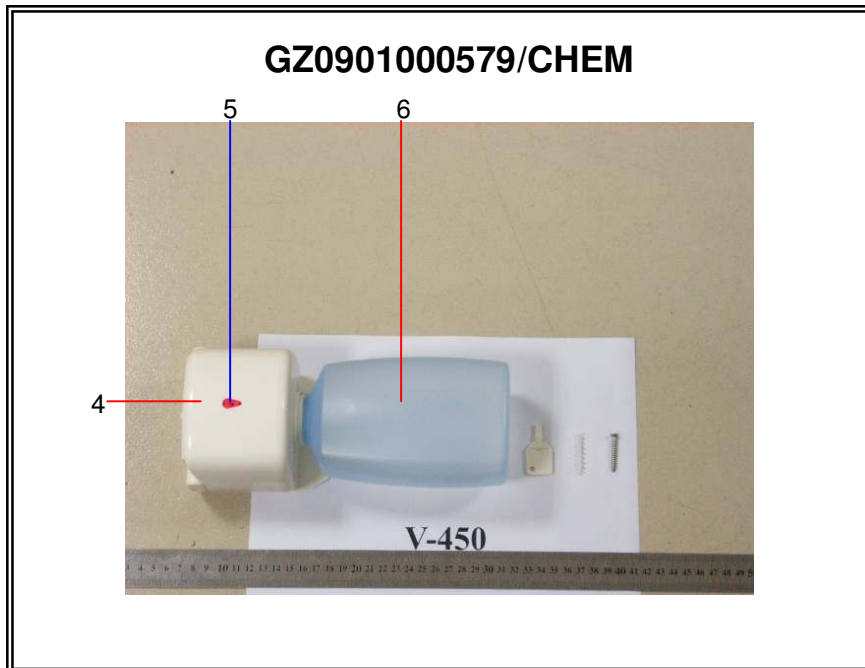
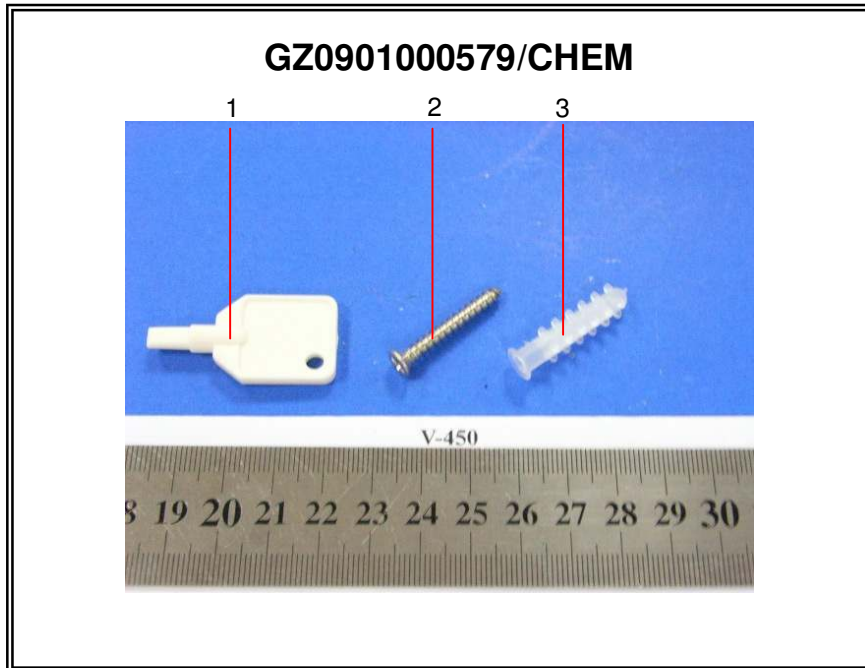


This document is issued by the Company under its General Conditions of Service printed overleaf or available on request and accessible at [http://www.sgs.com/terms\\_and\\_conditions.htm](http://www.sgs.com/terms_and_conditions.htm). Attention is drawn to the limitation of liability, indemnification and jurisdiction issues defined therein. Any holder of this document is advised that information contained hereon reflects the Company's findings at the time of its intervention only and within the limits of Client's instructions, if any. The Company's sole responsibility is to its Client and this document does not generate parties to a transaction from exercising all their rights and obligations under the transaction documents. Any unauthorized alteration, forgery or falsification of the content or appearance of this document is unlawful and offenders may be prosecuted to the fullest extent of the law.

Unless otherwise stated, the results shown in this test report refer only to the sample(s) tested. This document cannot be reproduced except in full, without prior approval of the Company.



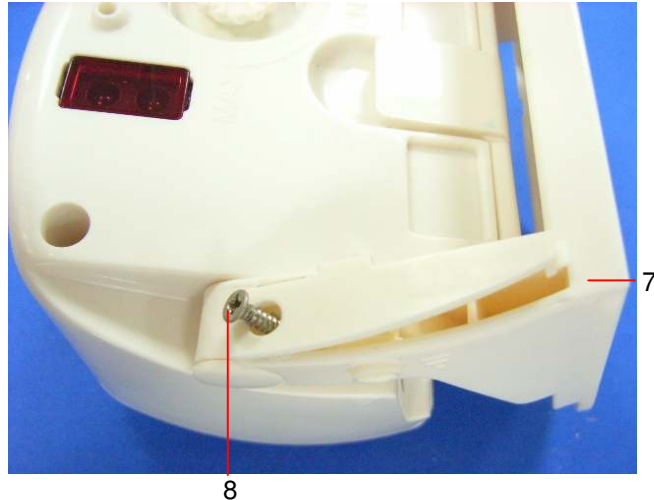




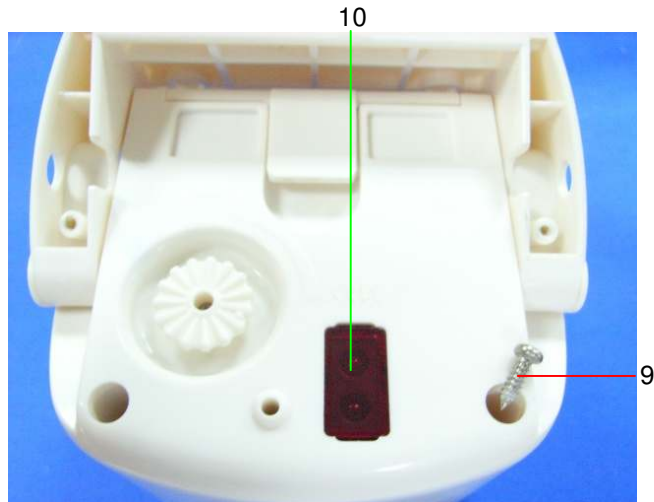
This document is issued by the Company under its General Conditions of Service printed overleaf or available on request and accessible at [http://www.sgs.com/terms\\_and\\_conditions.htm](http://www.sgs.com/terms_and_conditions.htm). Attention is drawn to the limitation of liability, indemnification and jurisdiction issues defined therein. Any holder of this document is advised that information contained herein reflects the Company's findings at the time of its intervention only and within the limits of Client's instructions, if any. The Company's sole responsibility is to its Client and this document does not generate parties to a transaction from exercising all their rights and obligations under the transaction documents. Any unauthorized alteration, forgery or falsification of the content or appearance of this document is unlawful and offenders may be prosecuted to the fullest extent of the law. Unless otherwise stated, the results shown in this test report refer only to the sample(s) tested. This document cannot be reproduced except in full, without prior approval of the Company.



**GZ0901000579/CHEM**



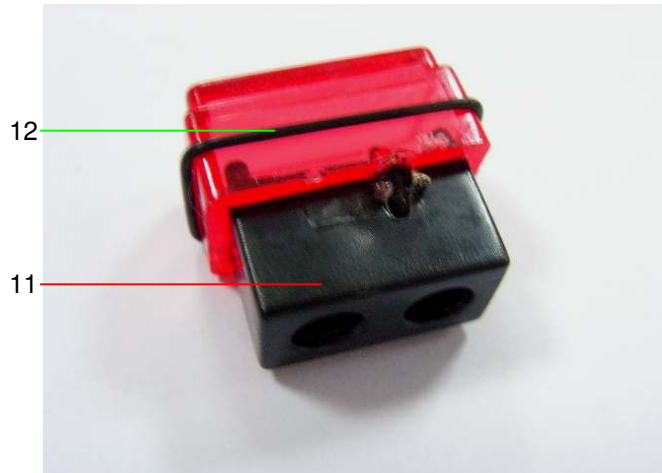
**GZ0901000579/CHEM**



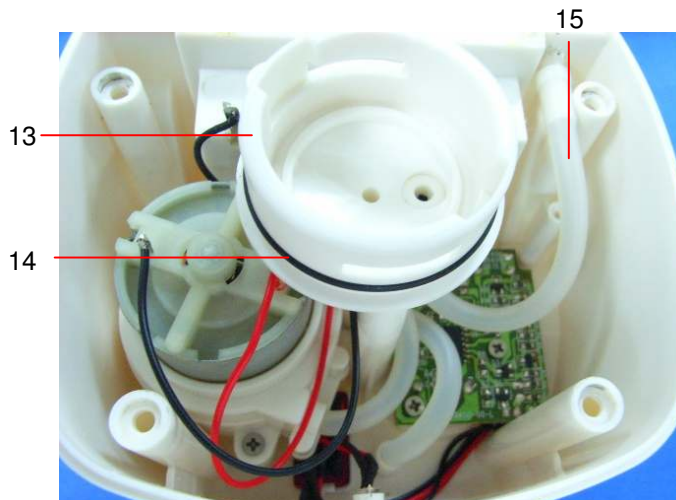
This document is issued by the Company under its General Conditions of Service printed overleaf or available on request and accessible at [http://www.sgs.com/terms\\_and\\_conditions.htm](http://www.sgs.com/terms_and_conditions.htm). Attention is drawn to the limitation of liability, indemnification and jurisdiction issues defined therein. Any holder of this document is advised that information contained herein reflects the Company's findings at the time of its intervention only and within the limits of Client's instructions, if any. The Company's sole responsibility is to its Client and this document does not generate parties to a transaction from exercising all their rights and obligations under the transaction documents. Any unauthorized alteration, forgery or falsification of the content or appearance of this document is unlawful and offenders may be prosecuted to the fullest extent of the law. Unless otherwise stated, the results shown in this test report refer only to the sample(s) tested. This document cannot be reproduced except in full, without prior approval of the Company.



## GZ0901000579/CHEM

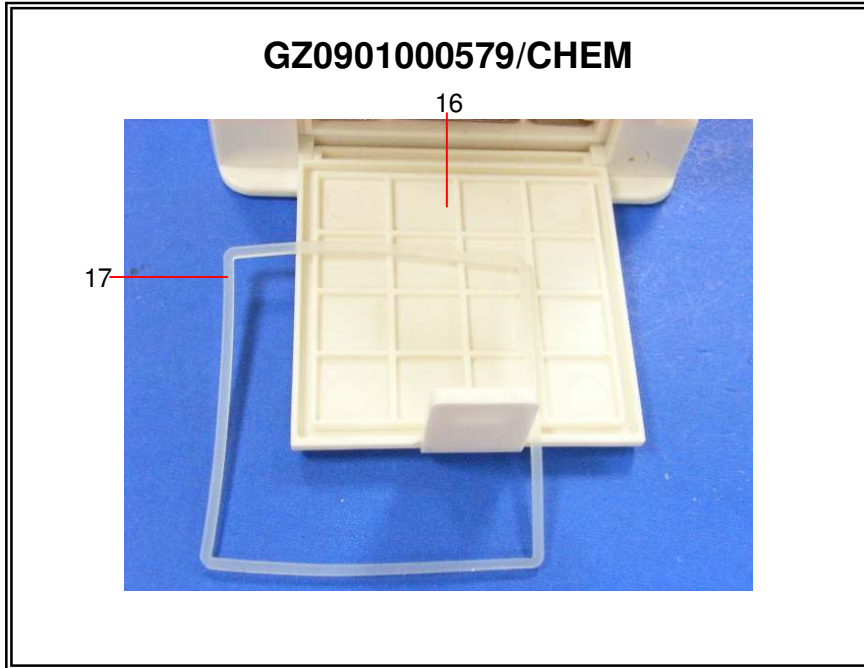


## GZ0901000579/CHEM



This document is issued by the Company under its General Conditions of Service printed overleaf or available on request and accessible at [http://www.sgs.com/terms\\_and\\_conditions.htm](http://www.sgs.com/terms_and_conditions.htm). Attention is drawn to the limitation of liability, indemnification and jurisdiction issues defined therein. Any holder of this document is advised that information contained herein reflects the Company's findings at the time of its intervention only and within the limits of Client's instructions, if any. The Company's sole responsibility is to its Client and this document does not generate parties to a transaction from exercising all their rights and obligations under the transaction documents. Any unauthorized alteration, forgery or falsification of the content or appearance of this document is unlawful and offenders may be prosecuted to the fullest extent of the law. Unless otherwise stated, the results shown in this test report refer only to the sample(s) tested. This document cannot be reproduced except in full, without prior approval of the Company.

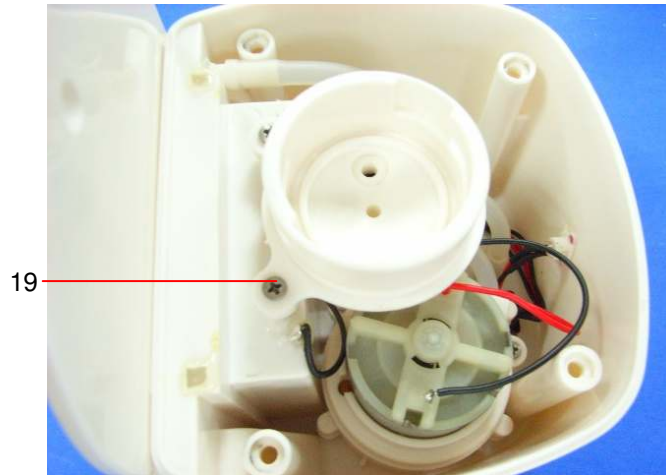




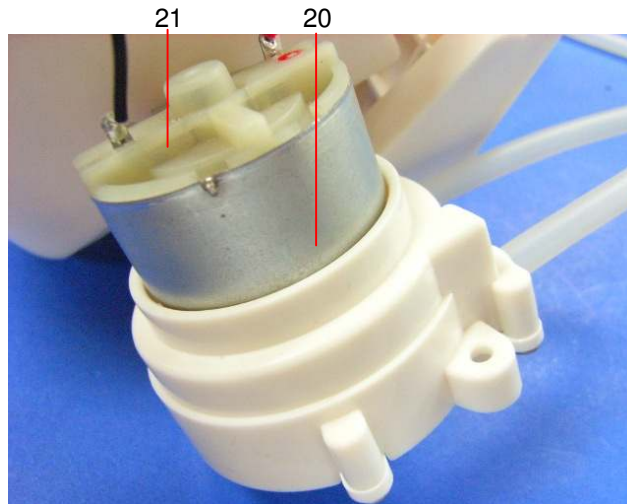
This document is issued by the Company under its General Conditions of Service printed overleaf or available on request and accessible at [http://www.sgs.com/terms\\_and\\_conditions.htm](http://www.sgs.com/terms_and_conditions.htm). Attention is drawn to the limitation of liability, indemnification and jurisdiction issues defined therein. Any holder of this document is advised that information contained herein reflects the Company's findings at the time of its intervention only and within the limits of Client's instructions, if any. The Company's sole responsibility is to its Client and this document does not generate parties to a transaction from exercising all their rights and obligations under the transaction documents. Any unauthorized alteration, forgery or falsification of the content or appearance of this document is unlawful and offenders may be prosecuted to the fullest extent of the law. Unless otherwise stated, the results shown in this test report refer only to the sample(s) tested. This document cannot be reproduced except in full, without prior approval of the Company.



## GZ0901000579/CHEM

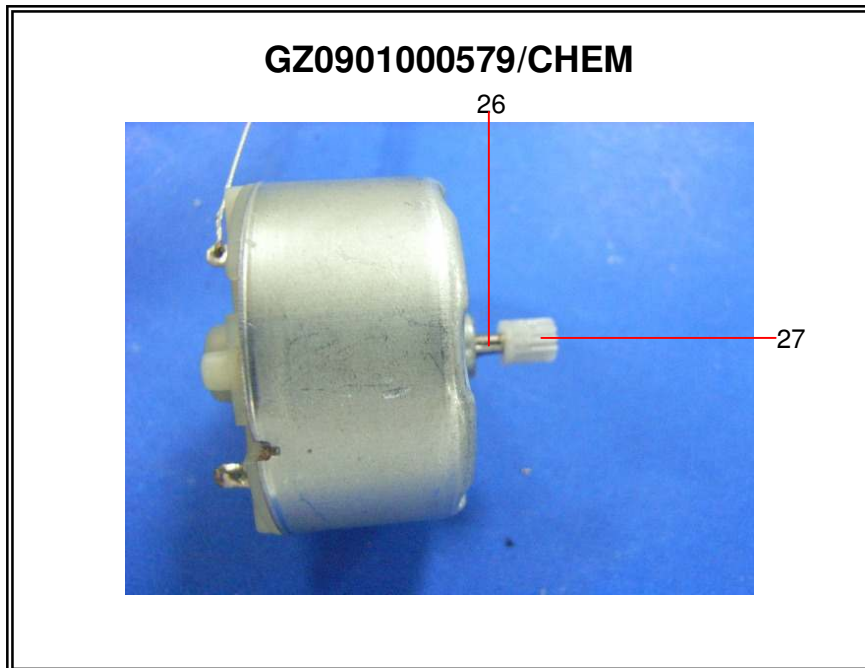
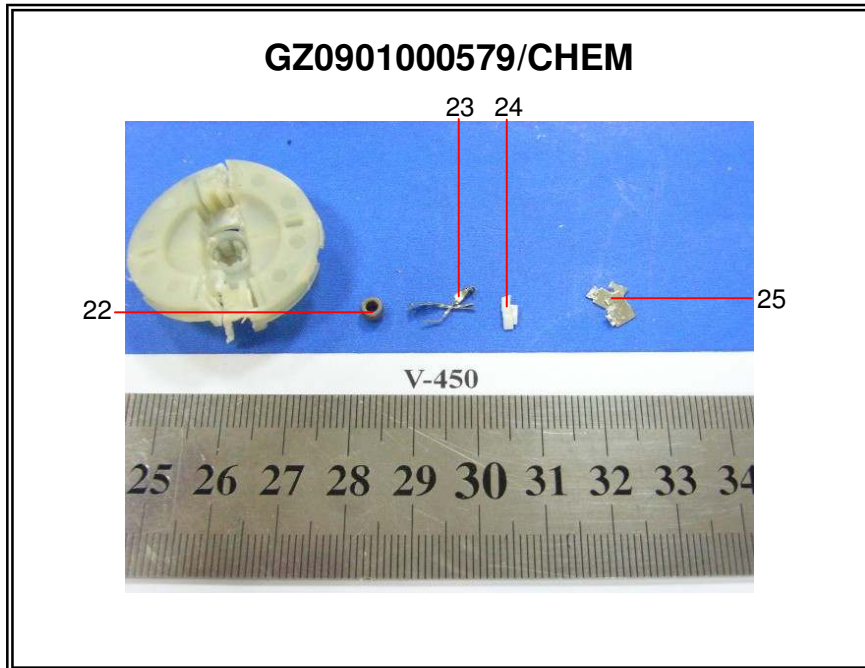


## GZ0901000579/CHEM



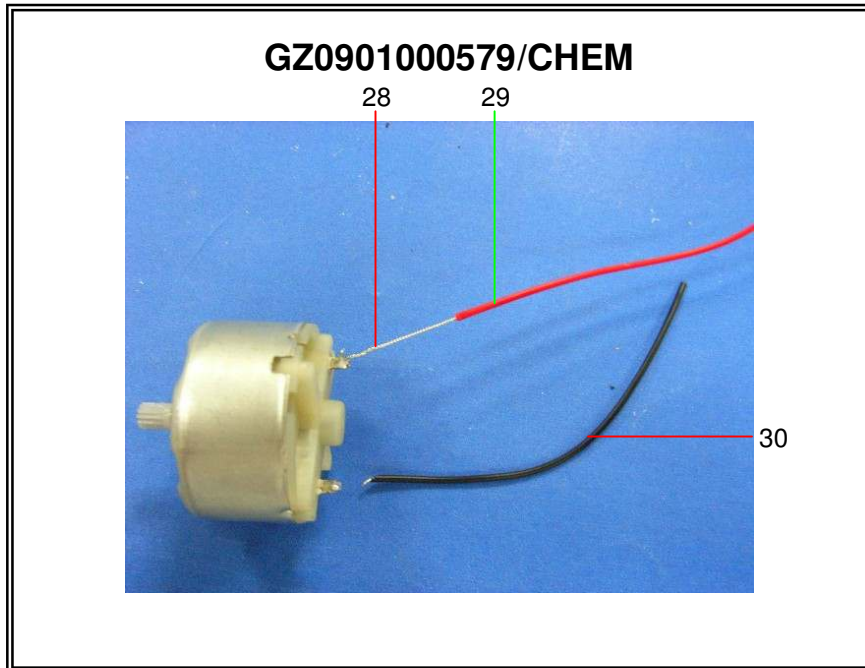
This document is issued by the Company under its General Conditions of Service printed overleaf or available on request and accessible at [http://www.sgs.com/terms\\_and\\_conditions.htm](http://www.sgs.com/terms_and_conditions.htm). Attention is drawn to the limitation of liability, indemnification and jurisdiction issues defined therein. Any holder of this document is advised that information contained herein reflects the Company's findings at the time of its intervention only and within the limits of Client's instructions, if any. The Company's sole responsibility is to its Client and this document does not constitute parties to a transaction from exercising all their rights and obligations under the transaction documents. Any unauthorized alteration, forgery or falsification of the content or appearance of this document is unlawful and offenders may be prosecuted to the fullest extent of the law. Unless otherwise stated, the results shown in this test report refer only to the sample(s) tested. This document cannot be reproduced except in full, without prior approval of the Company.





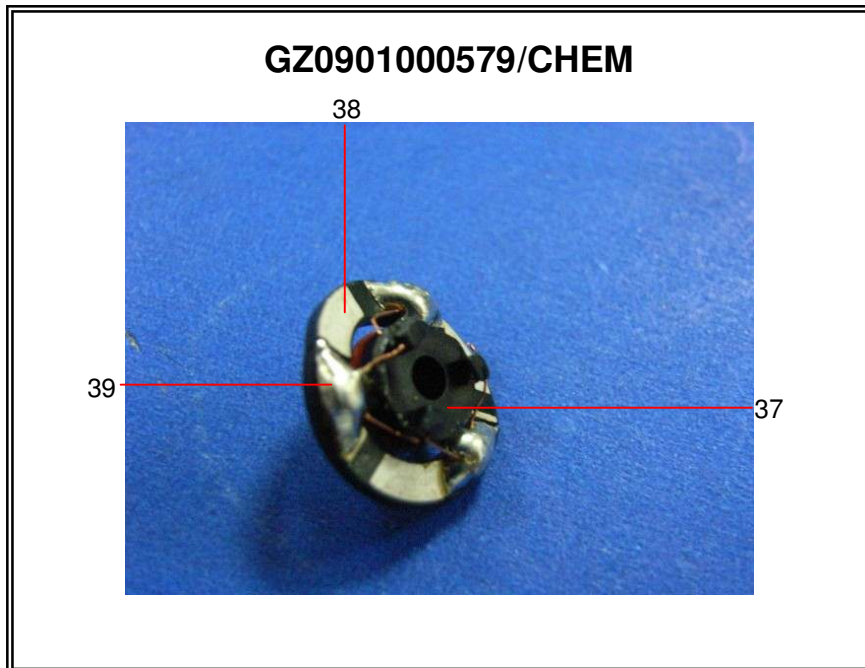
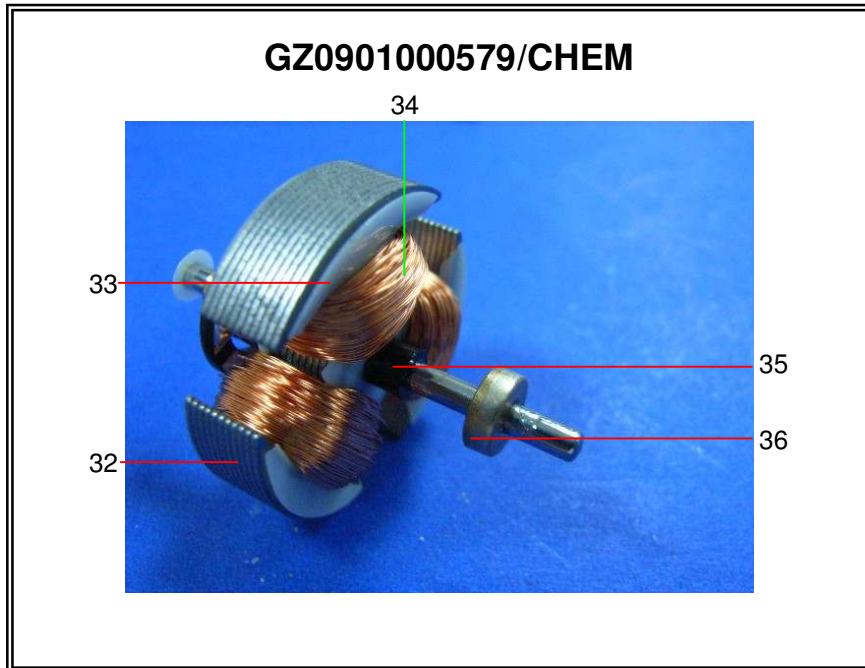
This document is issued by the Company under its General Conditions of Service printed overleaf or available on request and accessible at [http://www.sgs.com/terms\\_and\\_conditions.htm](http://www.sgs.com/terms_and_conditions.htm). Attention is drawn to the limitation of liability, indemnification and jurisdiction issues defined therein. Any holder of this document is advised that information contained herein reflects the Company's findings at the time of its intervention only and within the limits of Client's instructions, if any. The Company's sole responsibility is to its Client and this document does not generate parties to a transaction from exercising all their rights and obligations under the transaction documents. Any unauthorized alteration, forgery or falsification of the content or appearance of this document is unlawful and offenders may be prosecuted to the fullest extent of the law. Unless otherwise stated, the results shown in this test report refer only to the sample(s) tested. This document cannot be reproduced except in full, without prior approval of the Company.





This document is issued by the Company under its General Conditions of Service printed overleaf or available on request and accessible at [http://www.sgs.com/terms\\_and\\_conditions.htm](http://www.sgs.com/terms_and_conditions.htm). Attention is drawn to the limitation of liability, indemnification and jurisdiction issues defined therein. Any holder of this document is advised that information contained hereon reflects the Company's findings at the time of its intervention only and within the limits of Client's instructions, if any. The Company's sole responsibility is to its Client and this document does not generate parties to a transaction from exercising all their rights and obligations under the transaction documents. Any unauthorized alteration, forgery or falsification of the content or appearance of this document is unlawful and offenders may be prosecuted to the fullest extent of the law. Unless otherwise stated, the results shown in this test report refer only to the sample(s) tested. This document cannot be reproduced except in full, without prior approval of the Company.



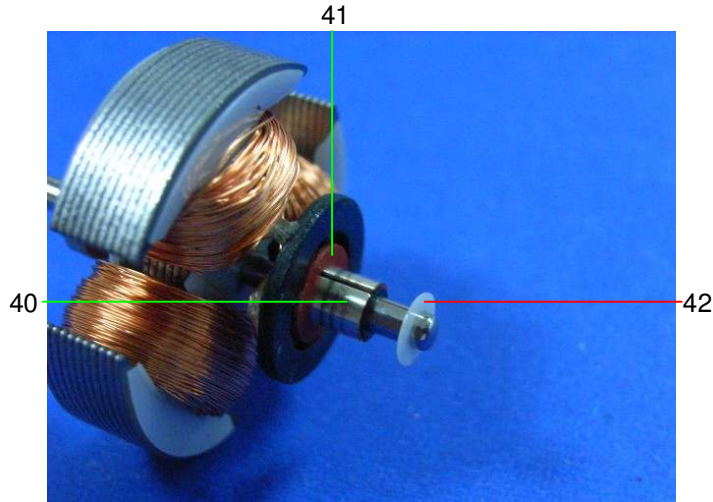


This document is issued by the Company under its General Conditions of Service printed overleaf or available on request and accessible at [http://www.sgs.com/terms\\_and\\_conditions.htm](http://www.sgs.com/terms_and_conditions.htm). Attention is drawn to the limitation of liability, indemnification and jurisdiction issues defined therein. Any holder of this document is advised that information contained hereon reflects the Company's findings at the time of its intervention only and within the limits of Client's instructions, if any. The Company's sole responsibility is to its Client and this document does not generate parties to a transaction from exercising all their rights and obligations under the transaction documents. Any unauthorized alteration, forgery or falsification of the content or appearance of this document is unlawful and offenders may be prosecuted to the fullest extent of the law. Unless otherwise stated, the results shown in this test report refer only to the sample(s) tested. This document cannot be reproduced except in full, without prior approval of the Company.

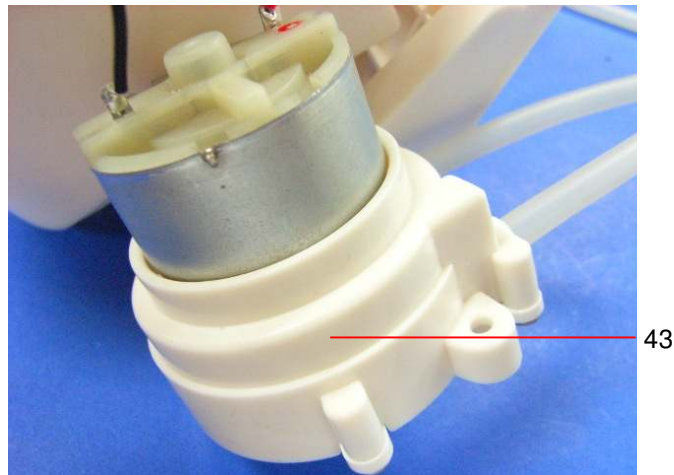




**GZ0901000579/CHEM**



**GZ0901000579/CHEM**

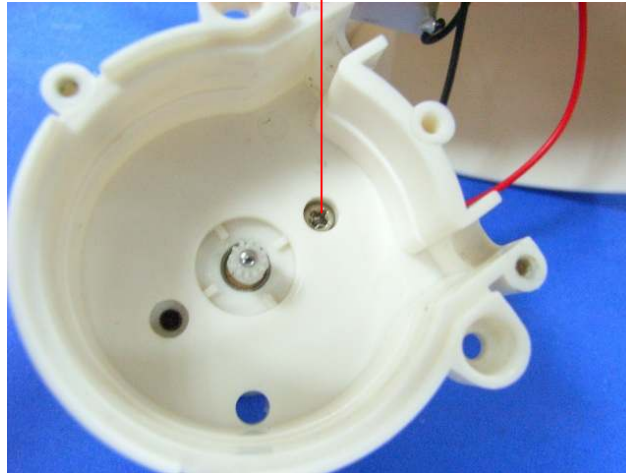


This document is issued by the Company under its General Conditions of Service printed overleaf or available on request and accessible at [http://www.sgs.com/terms\\_and\\_conditions.htm](http://www.sgs.com/terms_and_conditions.htm). Attention is drawn to the limitation of liability, indemnification and jurisdiction issues defined therein. Any holder of this document is advised that information contained herein reflects the Company's findings at the time of its intervention only and within the limits of Client's instructions, if any. The Company's sole responsibility is to its Client and this document does not generate parties to a transaction from exercising all their rights and obligations under the transaction documents. Any unauthorized alteration, forgery or falsification of the content or appearance of this document is unlawful and offenders may be prosecuted to the fullest extent of the law. Unless otherwise stated, the results shown in this test report refer only to the sample(s) tested. This document cannot be reproduced except in full, without prior approval of the Company.



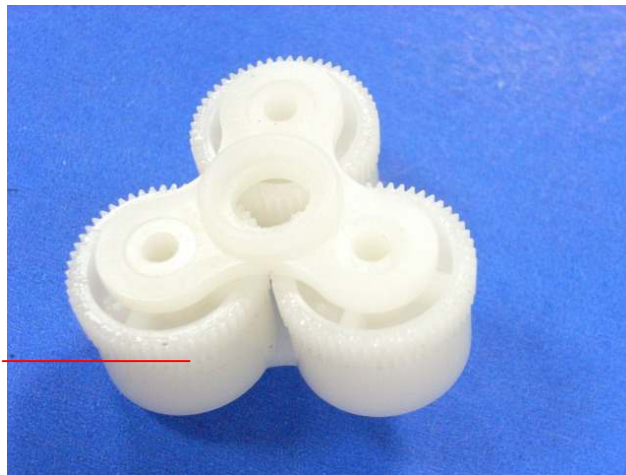
**GZ0901000579/CHEM**

44



**GZ0901000579/CHEM**

45



This document is issued by the Company under its General Conditions of Service printed overleaf or available on request and accessible at [http://www.sgs.com/terms\\_and\\_conditions.htm](http://www.sgs.com/terms_and_conditions.htm). Attention is drawn to the limitation of liability, indemnification and jurisdiction issues defined therein. Any holder of this document is advised that information contained herein reflects the Company's findings at the time of its intervention only and within the limits of Client's instructions, if any. The Company's sole responsibility is to its Client and this document does not generate parties to a transaction from exercising all their rights and obligations under the transaction documents. Any unauthorized alteration, forgery or falsification of the content or appearance of this document is unlawful and offenders may be prosecuted to the fullest extent of the law. Unless otherwise stated, the results shown in this test report refer only to the sample(s) tested. This document cannot be reproduced except in full, without prior approval of the Company.



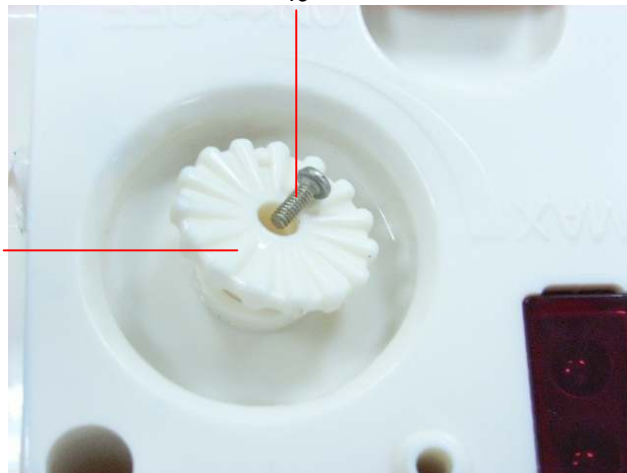
**GZ0901000579/CHEM**



47

46

**GZ0901000579/CHEM**



49

48

This document is issued by the Company under its General Conditions of Service printed overleaf or available on request and accessible at [http://www.sgs.com/terms\\_and\\_conditions.htm](http://www.sgs.com/terms_and_conditions.htm). Attention is drawn to the limitation of liability, indemnification and jurisdiction issues defined therein. Any holder of this document is advised that information contained herein reflects the Company's findings at the time of its intervention only and within the limits of Client's instructions, if any. The Company's sole responsibility is to its Client and this document does not generate parties to a transaction from exercising all their rights and obligations under the transaction documents. Any unauthorized alteration, forgery or falsification of the content or appearance of this document is unlawful and offenders may be prosecuted to the fullest extent of the law. Unless otherwise stated, the results shown in this test report refer only to the sample(s) tested. This document cannot be reproduced except in full, without prior approval of the Company.



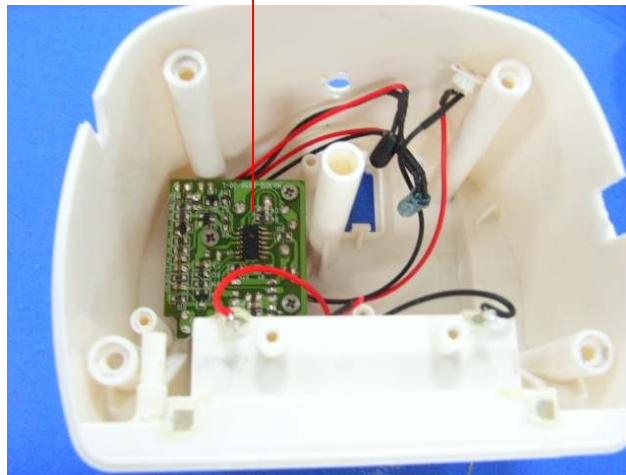
**GZ0901000579/CHEM**

50



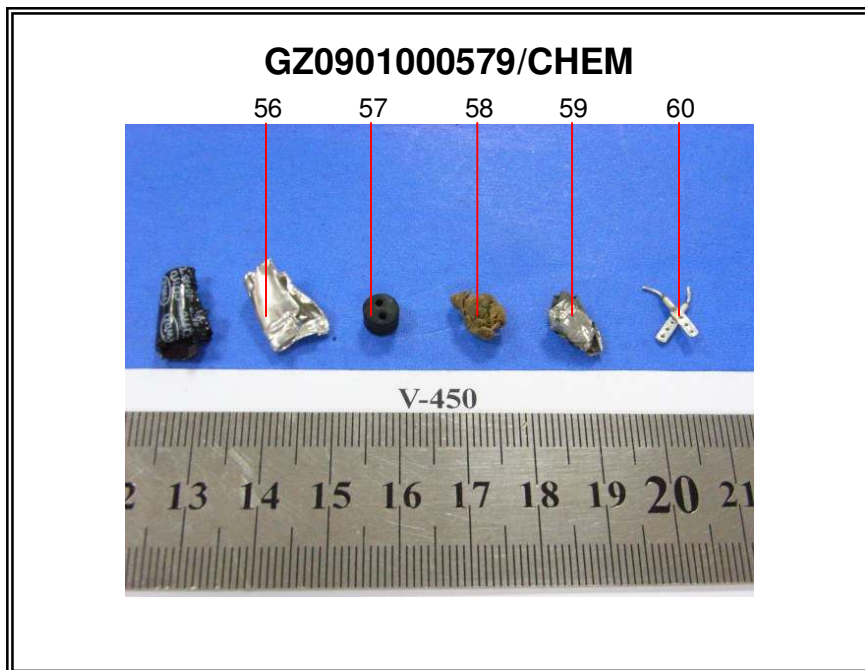
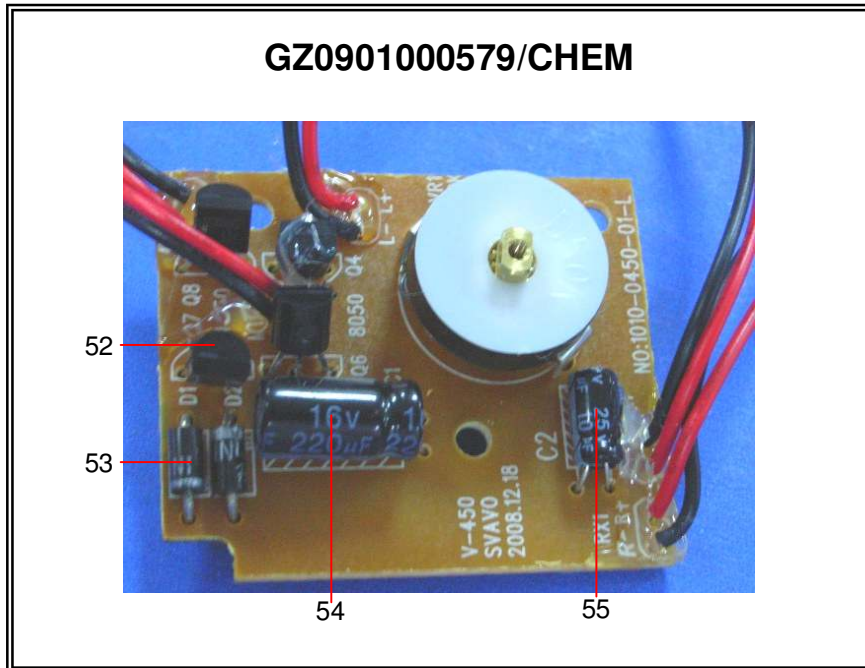
**GZ0901000579/CHEM**

51



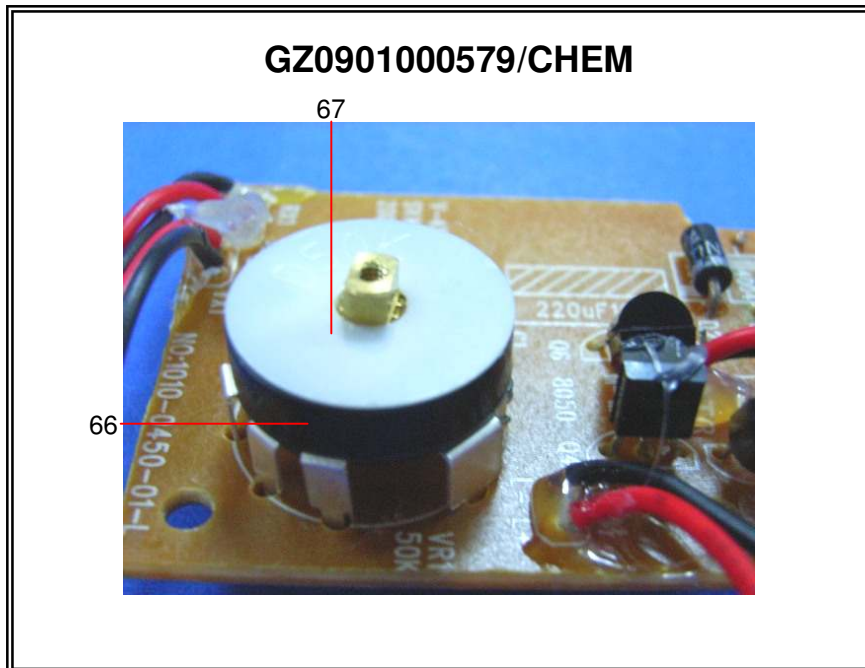
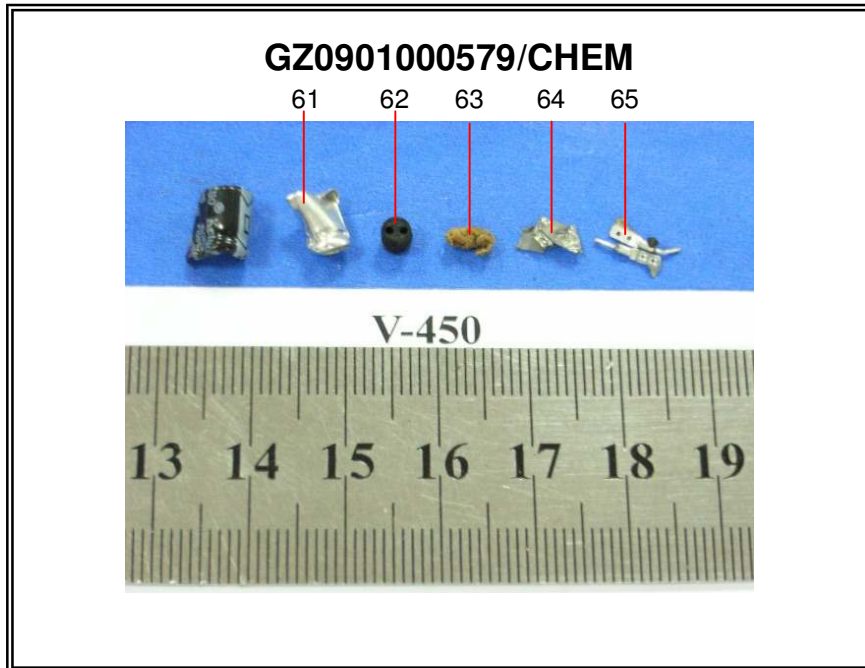
This document is issued by the Company under its General Conditions of Service printed overleaf or available on request and accessible at [http://www.sgs.com/terms\\_and\\_conditions.htm](http://www.sgs.com/terms_and_conditions.htm). Attention is drawn to the limitation of liability, indemnification and jurisdiction issues defined therein. Any holder of this document is advised that information contained hereon reflects the Company's findings at the time of its intervention only and within the limits of Client's instructions, if any. The Company's sole responsibility is to its Client and this document does not generate parties to a transaction from exercising all their rights and obligations under the transaction documents. Any unauthorized alteration, forgery or falsification of the content or appearance of this document is unlawful and offenders may be prosecuted to the fullest extent of the law. Unless otherwise stated, the results shown in this test report refer only to the sample(s) tested. This document cannot be reproduced except in full, without prior approval of the Company.





This document is issued by the Company under its General Conditions of Service printed overleaf or available on request and accessible at [http://www.sgs.com/terms\\_and\\_conditions.htm](http://www.sgs.com/terms_and_conditions.htm). Attention is drawn to the limitation of liability, indemnification and jurisdiction issues defined therein. Any holder of this document is advised that information contained hereon reflects the Company's findings at the time of its intervention only and within the limits of Client's instructions, if any. The Company's sole responsibility is to its Client and this document does not generate parties to a transaction from exercising all their rights and obligations under the transaction documents. Any unauthorized alteration, forgery or falsification of the content or appearance of this document is unlawful and offenders may be prosecuted to the fullest extent of the law. Unless otherwise stated, the results shown in this test report refer only to the sample(s) tested. This document cannot be reproduced except in full, without prior approval of the Company.





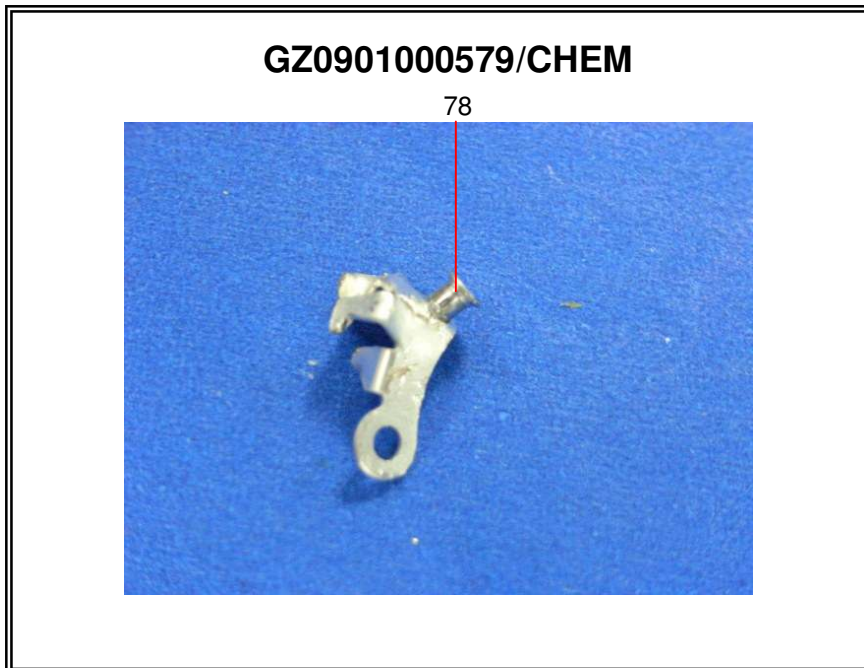
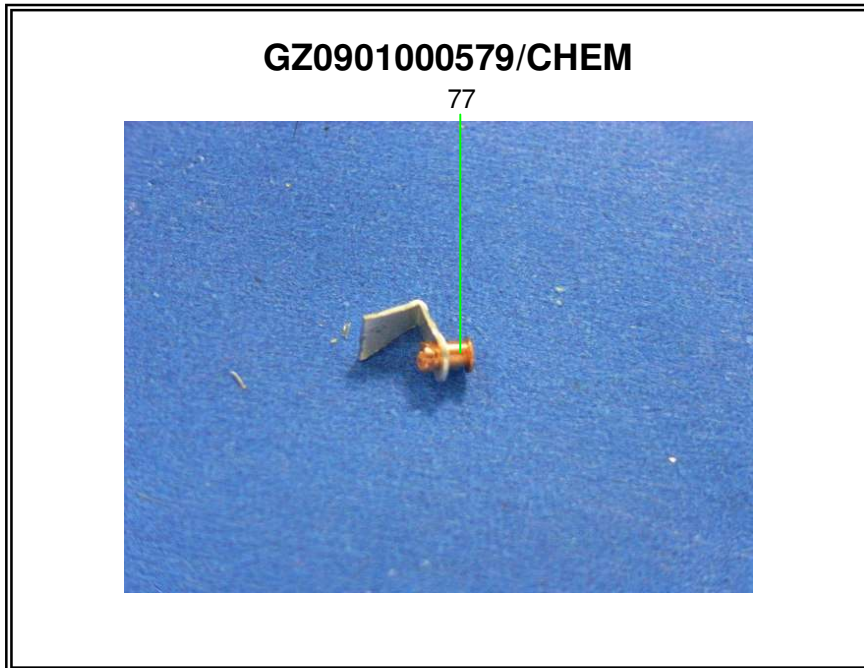
This document is issued by the Company under its General Conditions of Service printed overleaf or available on request and accessible at [http://www.sgs.com/terms\\_and\\_conditions.htm](http://www.sgs.com/terms_and_conditions.htm). Attention is drawn to the limitation of liability, indemnification and jurisdiction issues defined therein. Any holder of this document is advised that information contained herein reflects the Company's findings at the time of its intervention only and within the limits of Client's instructions, if any. The Company's sole responsibility is to its Client and this document does not constitute part of a transaction from exercising all their rights and obligations under the transaction documents. Any unauthorized alteration, forgery or falsification of the content or appearance of this document is unlawful and offenders may be prosecuted to the fullest extent of the law. Unless otherwise stated, the results shown in this test report refer only to the sample(s) tested. This document cannot be reproduced except in full, without prior approval of the Company.





This document is issued by the Company under its General Conditions of Service printed overleaf or available on request and accessible at [http://www.sgs.com/terms\\_and\\_conditions.htm](http://www.sgs.com/terms_and_conditions.htm). Attention is drawn to the limitation of liability, indemnification and jurisdiction issues defined therein. Any holder of this document is advised that information contained hereon reflects the Company's findings at the time of its intervention only and within the limits of Client's instructions, if any. The Company's sole responsibility is to its Client and this document does not generate parties to a transaction from exercising all their rights and obligations under the transaction documents. Any unauthorized alteration, forgery or falsification of the content or appearance of this document is unlawful and offenders may be prosecuted to the fullest extent of the law. Unless otherwise stated, the results shown in this test report refer only to the sample(s) tested. This document cannot be reproduced except in full, without prior approval of the Company.

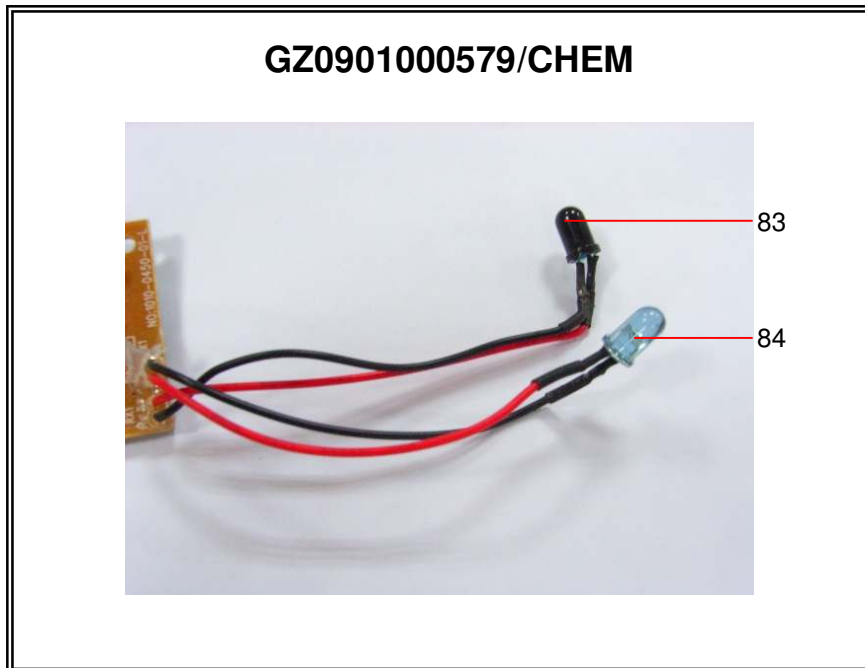
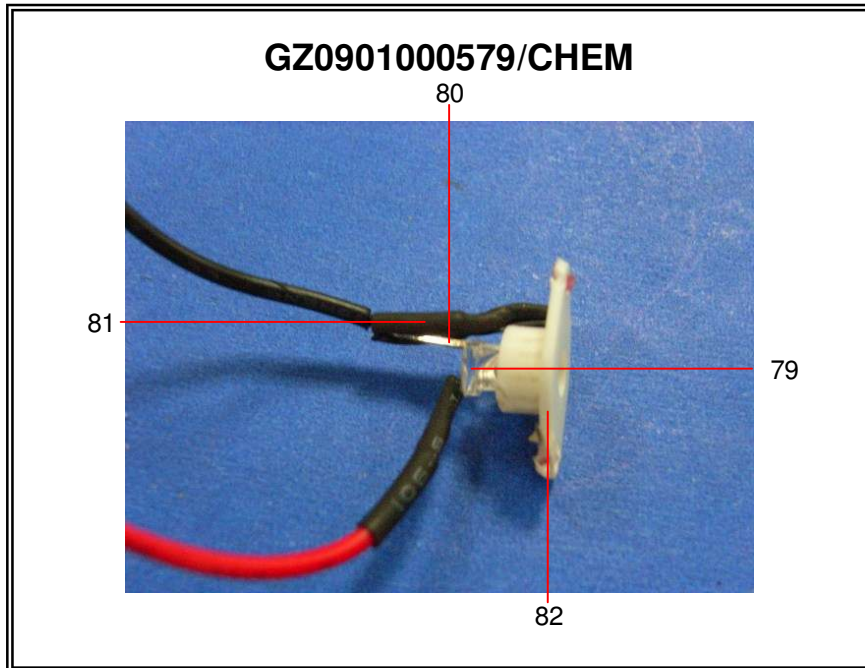




This document is issued by the Company under its General Conditions of Service printed overleaf or available on request and accessible at [http://www.sgs.com/terms\\_and\\_conditions.htm](http://www.sgs.com/terms_and_conditions.htm). Attention is drawn to the limitation of liability, indemnification and jurisdiction issues defined therein. Any holder of this document is advised that information contained herein reflects the Company's findings at the time of its intervention only and within the limits of Client's instructions, if any. The Company's sole responsibility is to its Client and this document does not constitute part of a transaction from exercising all their rights and obligations under the transaction documents. Any unauthorized alteration, forgery or falsification of the content or appearance of this document is unlawful and offenders may be prosecuted to the fullest extent of the law. Unless otherwise stated, the results shown in this test report refer only to the sample(s) tested. This document cannot be reproduced except in full, without prior approval of the Company.

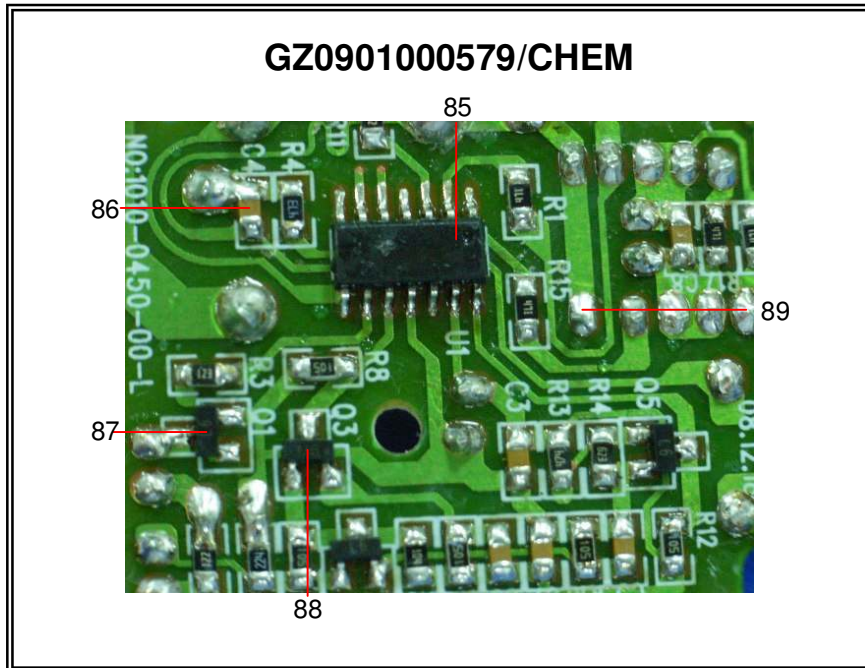






This document is issued by the Company under its General Conditions of Service printed overleaf or available on request and accessible at [http://www.sgs.com/terms\\_and\\_conditions.htm](http://www.sgs.com/terms_and_conditions.htm). Attention is drawn to the limitation of liability, indemnification and jurisdiction issues defined therein. Any holder of this document is advised that information contained herein reflects the Company's findings at the time of its intervention only and within the limits of Client's instructions, if any. The Company's sole responsibility is to its Client and this document does not constitute parties to a transaction from exercising all their rights and obligations under the transaction documents. Any unauthorized alteration, forgery or falsification of the content or appearance of this document is unlawful and offenders may be prosecuted to the fullest extent of the law. Unless otherwise stated, the results shown in this test report refer only to the sample(s) tested. This document cannot be reproduced except in full, without prior approval of the Company.





(SGS authenticate the photo on original report only)

\*\*\* End of Report \*\*\*

This document is issued by the Company under its General Conditions of Service printed overleaf or available on request and accessible at [http://www.sgs.com/terms\\_and\\_conditions.htm](http://www.sgs.com/terms_and_conditions.htm). Attention is drawn to the limitation of liability, indemnification and jurisdiction issues defined therein. Any holder of this document is advised that information contained hereon reflects the Company's findings at the time of its intervention only and within the limits of Client's instructions, if any. The Company's sole responsibility is to its Client and this document does not generate parties to a transaction from exercising all their rights and obligations under the transaction documents. Any unauthorized alteration, forgery or falsification of the content or appearance of this document is unlawful and offenders may be prosecuted to the fullest extent of the law. Unless otherwise stated, the results shown in this test report refer only to the sample(s) tested. This document cannot be reproduced except in full, without prior approval of the Company.

