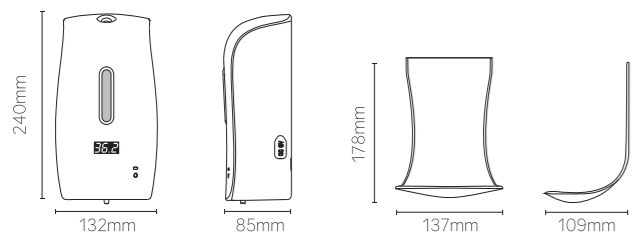


型号	尺寸	材质	比例	设计	设计时间	修改内容	修改时间
PL-151049C 英文中性说明书	双面印风琴折 单色印刷 成品: 100*140mm	80g书纸	1:1	张玉英	2021-10-22	/	/

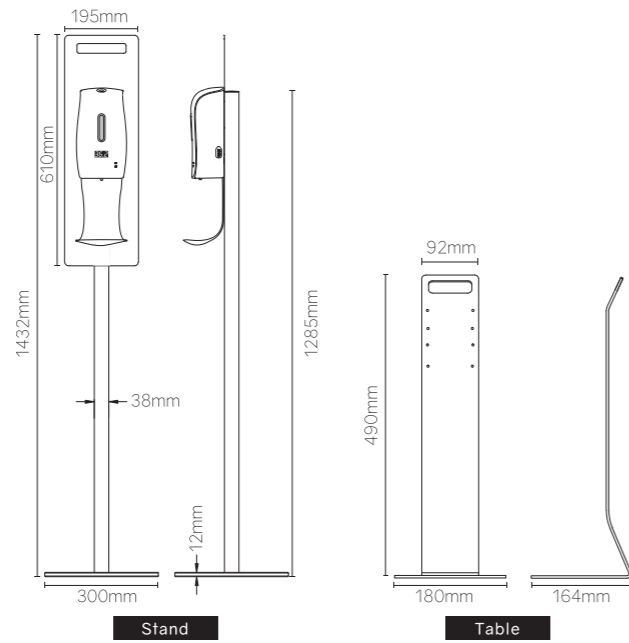
## Specification

Product Name	Automatic soap dispenser with thermometer
Suitable Liquid	Liquid alcoholcity:75%
Liquid Output Type	Spray
Liquid Volume Adjustor	1: 0.5ml 2: 1.0ml
Sensor Type	Infrared sensor
Sensor Range	Liquid output: 2-12cm Temperature: 5-8cm
Temperature Display Range	<10°C Display "LO" 10-42.9°C Display the measured temperature >42.9°C Display "HI"
Material	ABS+PP
Capacity	600ml
Battery	4 pcs AA alkaline batteries (not included)
Adaptor	Input voltage: AC100-240V 50/60Hz Output voltage: DC6.0V 1A (not included but optional)

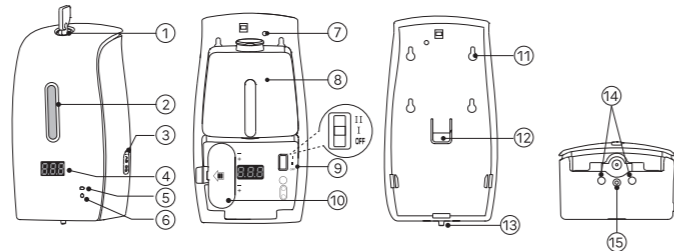
## Unit Dimension



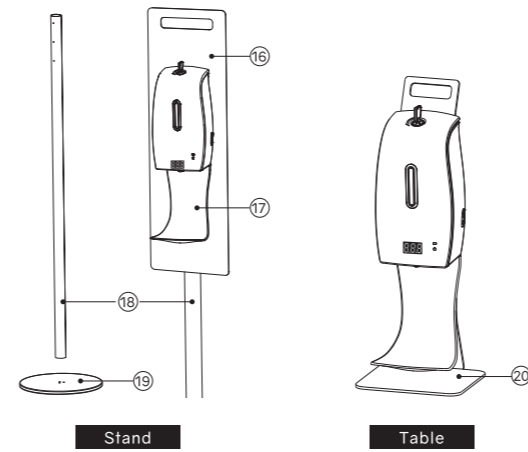
-1-



## Parts List



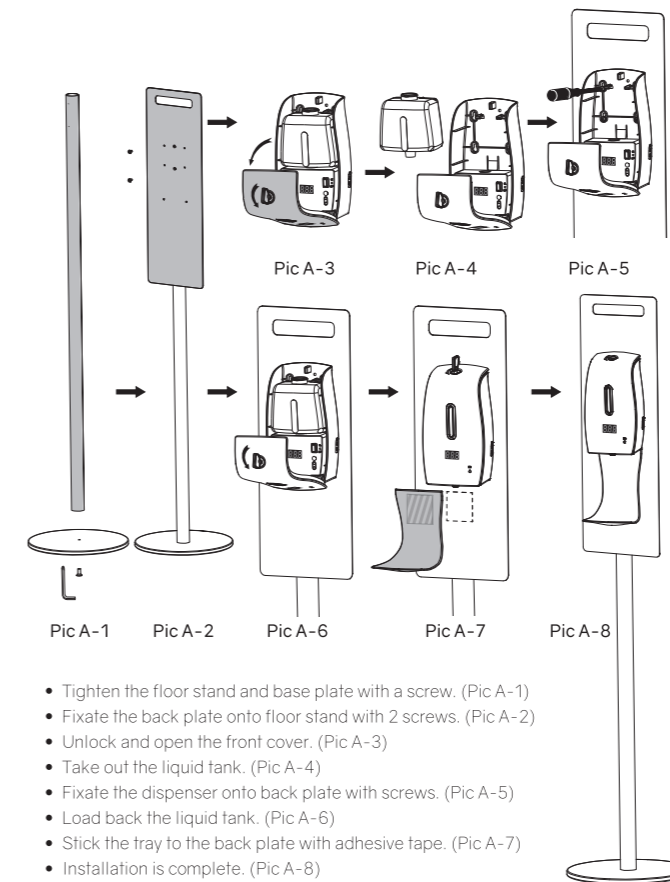
-2-



1. Lock	11. Mounting holes x 4
2. Liquid visible window	12. Control box fastener
3. Adapter socket	13. Liquid outlet
4. Temperature display	14. Induction area
5. Red indicator light	15. Temperature sensor
6. Green indicator light	16. Back plate
7. Anti-theft hole	17. Tray
8. Liquid tank	18. Floor stand
9. Power/ liquid adjust	19. Base plate
10. Battery chamber	20. Table stand

-3-

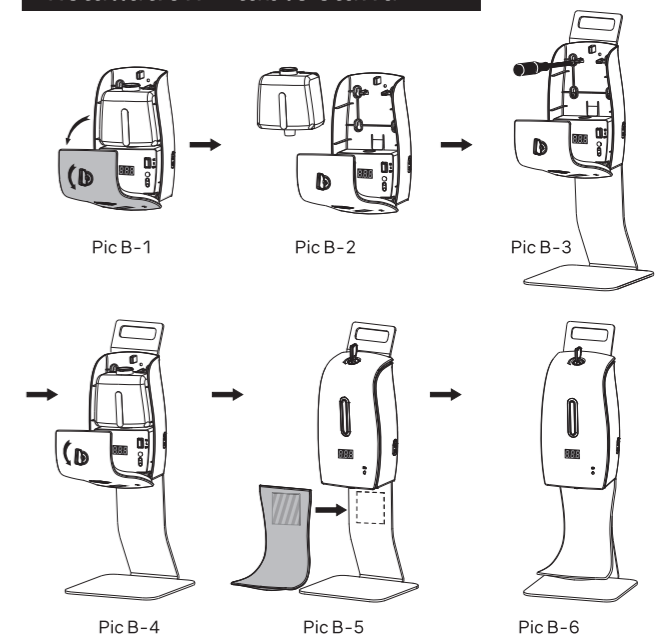
## Installation – floor stand



- Tighten the floor stand and base plate with a screw. (Pic A-1)
- Fixate the back plate onto floor stand with 2 screws. (Pic A-2)
- Unlock and open the front cover. (Pic A-3)
- Take out the liquid tank. (Pic A-4)
- Fixate the dispenser onto back plate with screws. (Pic A-5)
- Load back the liquid tank. (Pic A-6)
- Stick the tray to the back plate with adhesive tape. (Pic A-7)
- Installation is complete. (Pic A-8)

-4-

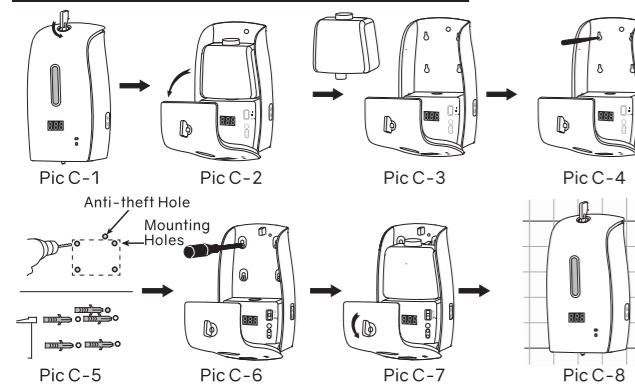
## Installation – table stand



- Unlock and open the front cover. (Pic B-1)
- Take out the liquid tank. (Pic B-2)
- Fixate the dispenser onto the table stand with 4 mounting screws. (Pic B-3)
- Load back the liquid tank. (Pic B-4)
- Stick the tray to the back plate with adhesive tape. (Pic B-5)
- Installation is complete. (Pic B-6)

-5-

## Installation – wall mount



Install the dispenser properly with at least 40cm free space below it.

- Insert the key into the lock. (Pic C-1)
- Unlock and open the front cover. (Pic C-2)
- Take out the liquid tank. (Pic C-3)
- Make the drilling marks. (Pic C-4)
- Drill the holes and insert the plastic plugs. (Pic C-5)
- Fixate the dispenser onto the wall with screws. (Pic C-6)
- Load back the liquid tank. (Pic C-7)
- Installation is complete. (Pic C-8)

※ Anti-theft hole is for installation in public places.

## Maintenance

1. Please use wet towel to clean the dispenser after power OFF.
2. Do not use steel balls or any detergents containing acidic or corrosive substances to clean the dispenser, it will incur damage to the surface.
3. Please take out the batteries and empty the liquid tank when the dispenser is under long-term unused condition.
4. The dispenser is for indoor use only and please place it in cool area to avoid strong sunlight or heat.
5. This is not a waterproof dispenser and do not install it in high humidity places such as shower room.

-6-

## How to Use

1. Insert batteries or connect adaptor to get power supply.

Batteries loading (Pic D-1):

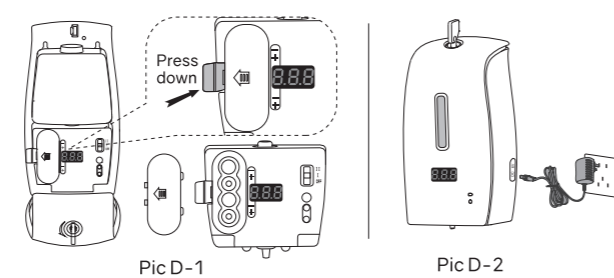
Unlock the lid and insert 4 pcs AA alkaline batteries properly.

Or

- Adaptor connecting (Pic D-2):

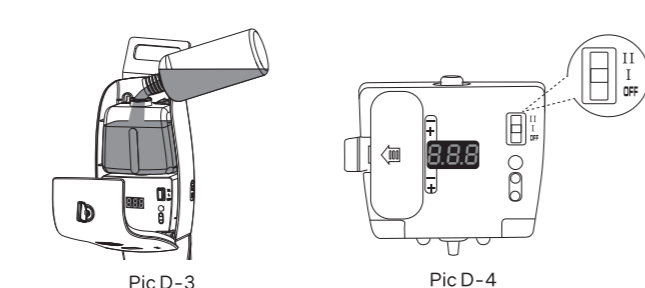
Use DV6V AC/DC adaptor, don't forget to take out the batteries if you use adaptor.

※ Red LED light will blink frequently to act as a battery-changing reminder.



2. Fill in suitable liquid according to your product type and do not overfill. (Pic D-3)
3. Start to use (Pic D-4)

- Slide the switch to "I" position to get the small volume;
- Slide the switch to "II" position to get the large volume;
- Slide the switch to "OFF" position to turn the power off.



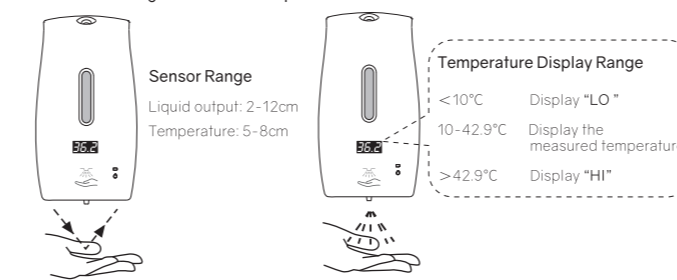
-7-

## 4. Ready to use

- Prime the dispenser by inducting several times to let the air out before first using.

- Approach your hand to the sensor area to activate the dispenser till the liquid comes out.

※ Green LED light will blink once per activation.



※ ATTENTION: The sensor has no reaction on dark or black objects.

## Trouble Shooting

Issues	Trouble shooting
No liquid out	a. Check the batteries status; ① Red LED light blinks once every 3 seconds when standby, the battery voltage is between 3.9V and 4.8V, the product remains functional ② Red LED light blinks twice when sensor activated, the battery volatage is lower than 3.9V, the product is out of function
	b. Check if all parts are installed properly;
	c. Check if the liquid tank is empty and the liquid is compatible with the product type;
	d. Check the motor sound to confirm if the motor works.

-8-

## Safety Caution

Ignoring or misunderstanding these signs will result in the following two situations:

**Warning** This sign indicates "may cause personal injury"

**Attention** This sign indicates "may cause damage to the product"

Instruction	Prohibited	Mandatory	Do not disassemble without permission	Keep away from fire
-------------	------------	-----------	---------------------------------------	---------------------

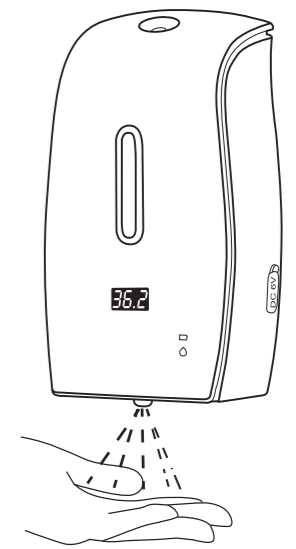
Attention	
Do not expose the unit to direct sunlight to avoid deformation.	
Do not use the product rudely.	
Please take out the batteries and empty the tank when in long-term unused condition.	
Please clean the unit regularly.	
Do not clean the unit with water.	
Do not intentionally break or crash the unit.	
Do not clean the unit with strong corrosive chemical solvent. -Will cause surface damage or deformation.	
Do not let the dust into the liquid tank. -May block the tube and need to replace the liquid and clean the tank.	
Do not disassemble, repair or transform without permission. -Will cause breakdown. Please consult the purchase store or customer service for repair issue.	
Do not fill in corrosive chemicals.	
Keep away from fire.	

-9-

# USER MANUAL

## Automatic Soap Dispenser with Thermometer

PL-151049C



Please read user manual carefully before using.